



BRENTFORD SCHOOL FOR GIRLS

BRENTFORD 6th FORM

VISION | CREATIVITY | EXCELLENCE

HEAD TEACHER: MARAIS LEENDERS | 5 BOSTON MANOR ROAD, BRENTFORD, TW8 0PG | TEL: 020 8847 4281 | EMAIL: GENERAL@BRENTFORD.HOUNSLOW.SCH.UK | WEB: WWW.BRENTFORD.HOUNSLOW.SCH.UK

April 2026

PMA

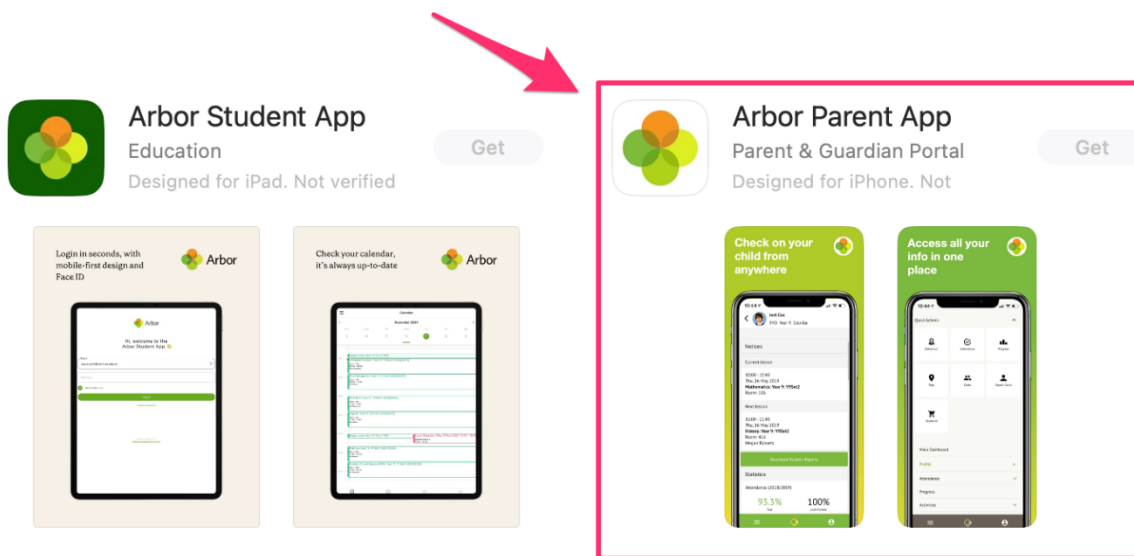
Dear Parent/Carer,

RE: Parent App

We are pleased to introduce the Arbor Parent App, our new way to receive school news, see attendance information and register your daughter to take part in clubs. We hope this will further strengthen the communication that we have between ourselves and parents.

The app was made available from Friday 3rd April 2026.

To download the app, it is important to note there are two Arbor Apps - please ensure that you are downloading the 'Parent' version from either the Apple App Store or Google Play. We are looking to launch the student app very soon too.



Click the 'First-time logging in' button, or if you cannot see that, select 'Forgotten password' to prompt a password re-set.

Once you have logged in, you will initially need to verify your child's date of birth.

If you see a permissions' error, you may be using an email address that is not the same as the school records so please try any other email addresses that you may have used and check the spelling correctly.

If the issue persists, please contact the school (admin@brentford.hounslow.sch.uk) to ensure there are no duplicate records and that you have been linked correctly to your student.

"TOP 100 NON-SELECTIVE STATE-FUNDED SCHOOLS IN THE COUNTRY" NICK GIBB, MINISTER OF STATE FOR SCHOOLS (FEBRUARY 2016)



If you have more than one student at the school, click the 'switch student' button at the bottom right of the app (or from the drop-down menu at the top left of the web browser version).

Please note that if your child has previously attended another Arbor School - their school name may also show on the log in page. You will not be able to log in to previous schools if you have no students currently enrolled in them. You can select the relevant school to proceed with logging in to Brentford Schools for Girls.

If you wish to remove the previous school - just reach out to the previous school and ask them to remove your email address from their records.

If Brentford Schools for Girls does not appear listed or if you are struggling to log in via the App - you may wish to try the web browser version: <https://brentford-school-for-girls.uk.arbor.education>
You may need to remove and reinstall the app to force a refresh if your new school does not appear.

We will be sending more details of the app features after Easter and will inform you when we launch new items on the app.

Yours faithfully,

A handwritten signature in black ink, appearing to be 'P May', written in a cursive style.

Mr P May
Senior Assistant Headteacher