

SMALL SCHOOL, BIG AMBITION



STARTING SECONDARY SCHOOL

**Year 7
2026-2027**

Table of Contents

01 | Welcome to Brentford School for Girls

Meet our Executive Headteacher and discover the vision of the "Brentford Girl"—ambitious, confident, flexible, inquisitive and reflective.

02 | Your Journey Begins Here

Navigate the transition timeline with key dates for orientation, parent meetings, and the start of the new term.

03 | Supporting Your Daughter

Learn about our comprehensive support systems, including The Hub, Form Tutors, and student well-being teams designed to build confidence.

04 | Daily Guide to Success

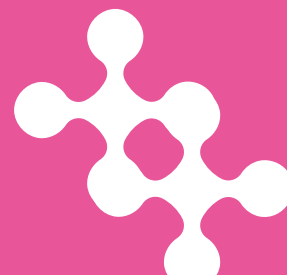
Find everything you need for the school day, from detailed uniform requirements to essential equipment lists and organization tips.

05 | Our Shared Commitment

Understand our core expectations for behavior, attendance, and safety, fostering a culture of mutual respect and responsibility.

06 | Partnering with Parents

Access practical advice, funding information for meals and uniforms, and key resources to help you stay connected with the school.



01 | WELCOME TO BRENTFORD SCHOOL FOR GIRLS

Meet our Executive Headteacher and discover the vision of the "Brentford Girl"
—**ambitious, confident, and inquisitive.**

Dear Parent/Carer,

It is with great pleasure that I welcome you to our highly successful school. We know that you and your daughter may be anxious at the very start of your journey with us, but I can assure you, she will be looked after whilst in our care and achieve outstanding success by the end of her journey with us!

Our commitment to academic excellence and personal well-being is total. Our success lies in the close and safe community that flourishes here at Brentford, the excellent relationships which exist between parents, staff and students and the focus on individual support and development that each girl receives.

'This school provides a caring and supportive learning community where pupils are encouraged to fulfill their potential intellectually, personally and emotionally'
(Ofsted 2019)



OUR VISION

Imagine the future Brentford Girl; she **thrives on challenge** and has a desire to **fulfil her learning potential**; she is able to **think independently** and is **confident in her social and academic capability**; she is **emotionally aware** and **emotionally intelligent**; she is **capable and dependable**; she is **resourceful and inquisitive**; she **embraces the technological world** as a global village and is ready to interact with others in the local and worldwide community; she **accepts the welfare of others as her responsibility**; she understands **the need for sustainable living** both locally and globally; she is **ready for life in the future – whatever that may be**. She is **the centre of our vision** and will remain the very **core of our being and purpose**.

02 | YOUR JOURNEY BEGINS HERE

YEAR 6 INTO 7 WELCOME EVENING

Wednesday 18th March 2026 (5:30-6.30pm)

We are keen to invite you and your daughter personally to the school community. Here you will get the opportunity to find out a bit more about joining the school and the transition activities we have specifically designed to ensure that your daughter joins in September with excitement and ready to become the "Brentford Girl of the Future." You and your daughters will also get a chance to meet others who will also be joining our community in September.

YEAR 6 INTO 7 INTERVIEWS

Wednesday 6th May 2026 (3:30-5.45pm)

You and your daughter will be invited in for a face to face meeting with a member of staff so that we can find out more information about your daughter and provide the opportunity to ask any questions should you wish to. All of this is in aid of better supporting her when she starts with us in September. You will receive a letter with an allocated time between 3.30pm and 5.45pm for you and your daughter to attend. If you are unable to attend at the allocated time on the day, please let the school know by emailing mmughal@brentford.hounslow.sch.uk.

SUBJECT TASTER LESSONS

Wednesday 10th June 2026 (4:30-5:45pm)

This is a wonderful opportunity for your daughter to once again meet with the students who will be starting with her in September. We will have a range of subjects offering sessions that your daughter can sign up for so that she can experience first hand a taster lesson in a secondary school environment. These will take place between 4.30pm and 5.45pm. The evening will end with a brief presentation from your daughter's head of year at 5.45pm in the main hall. Detailed information about each session and how your daughter can sign up for the sessions via our website will be sent prior to the event.

YEAR 7 INDUCTION DAY

Tuesday 7th July 2026

The day will give your daughter the opportunity to meet her tutor and other students in her tutor group as well as take part in team building activities and taster lessons. Pupils should attend the day in their primary school uniform.

MARK YOUR
CALENDAR AND
STAY INFORMED
THROUGH OUR
WEBSITE.

YOUR TRANSITION PASSPORT

As part of their transition journey, students will receive a special BSfG Passport to complete throughout the programme. We encourage them to bring their passports with them to each event, as their unique passport number will be entered into a prize draw.



Bring your passport to each event.

Your passport number will be used to enter you into a prize draw!

Passport Number:

Year 6 into 7
PASSPORT



Your journey to being a Brentford girl starts here.

The passport is also a wonderful keepsake, allowing them to look back and remember their journey into secondary school and the exciting first steps of their time at BSfG.

03 | SUPPORTING YOUR DAUGHTER EVERY STEP OF THE WAY

FORM TUTOR

The Form Tutor is your first point of contact, providing daily support and getting to know your daughter's strengths, interests, and needs. They promote high standards of behaviour, attendance, punctuality, and uniform, recognising achievements weekly with house points. They also guide your daughter's academic progress, encouraging her to work hard, set goals, and reach her full potential, while liaising with the Head of Year if any concerns arise.

Daily 30-minute tutor sessions or assemblies offer time for support, celebration, literacy, wellbeing, and team-building, helping students grow in confidence, character, and a sense of belonging.

HEAD OF YEAR

The Head of Year works closely with your daughter's Form Tutor to ensure she settles in well, feels happy and safe, and reaches her potential. Using data to track progress, they address any concerns and coordinate support to overcome barriers to learning. They also celebrate achievements, recognising individuals and tutor groups for academic excellence, attendance, and notable improvements.

THE POD

THE POD TEAM (PERSONALISED, OPPORTUNITIES, DEVELOPMENT) CONSISTS OF THE POD LEAD AND CHILD PROTECTION OFFICER, PASTORAL MANAGER, WELLBEING CO-ORDINATOR, SENCO, COUNSELLORS, AND SLT REPRESENTATIVES, OVERSEEING BOTH BEHAVIOUR, SAFEGUARDING AND WELLBEING. THE TEAM MEET REGULARLY TO DISCUSS STUDENT NEEDS AND MAKE REFERRALS TO BOTH INSIDE AND OUTSIDE AGENCIES IF REQUIRED. ALL REFERRALS ARE MADE THROUGH YOUR DAUGHTERS' HEAD OF YEAR.

SCHOOL DOG

At Brentford, we also have a school dog called 'Rudie.' Rudie attends school once a week and supports students in our ASD Centre, reluctant reader's programme, resilience interventions, and is a definite stress reliever at break and lunch times where he enjoys being petted.



At Brentford, we build confident, resilient students with strong self-esteem. Support is delivered through tutor time, assemblies, themed Wellbeing Weeks and our PSHE programme.

Each year, students complete the PASS (Pupil Attitudes to Self and School) assessment. Those identified as needing extra support receive targeted intervention from their Head of Year or the HUB team. This may include resilience groups, counselling referrals, HUB Ambassadors, friendship groups or student leadership opportunities — ensuring every student gets the right support to thrive.

OUR ETHOS, VALUES AND HOUSE SYSTEM

At Brentford School for Girls, our ethos is grounded in our core learning values, which we actively nurture throughout your daughter's journey with us. Our house system—named to reflect these values—brings them to life, helping students develop the personal, social and academic qualities needed to thrive both in school and beyond.

The house system strengthens our inclusive and collaborative community, offering a wide range of enjoyable, competitive activities throughout the year, including major sporting events. It enables every student to take part as a member of a team, without the added pressure of representing a school squad. House activities are designed to engage as many students as possible, particularly those who may not otherwise participate in wider school events.

Through working within their houses, students build teamwork across year groups, form new connections, and develop confidence and leadership skills. Regular house assemblies, led by our Year 11 House Captains, further promote a strong sense of identity, pride and belonging within each house and across the school. As a celebration of success, all students in the winning House are rewarded with an annual rewards trip.

Throughout your daughter's time at Brentford School for Girls, we are equally committed to developing her learning skills alongside her academic progress. Both our broad curriculum and extensive extracurricular programme provide rich and varied opportunities for students to strengthen these essential skills.

Our key learning skills are:

ADAPTABILITY
COLLABORATION
COMMUNICATION
CURIOSITY AND INNOVATION
EVALUATION
LEADERSHIP
CRITICAL THINKING
PERSONAL SKILLS



04 | YOUR DAILY GUIDE TO SUCCESS

A SCHOOL UNIFORM GIVES STUDENTS A SENSE OF PROFESSIONALISM AND BELONGING TO THE SCHOOL.
WE, THEREFORE, EXPECT STUDENTS TO WEAR UNIFORM FROM YEAR 7 TO YEAR 11 INCLUSIVE.

School Uniform

- School Blazer
- Pink Blouse – long or short sleeve, with collar for tie
- Black and pink clip-on tie (available in school and from Sanco)
- Black jumper or cardigan with logo
- House Badge
- Plain socks – black or white
- Tights – black or neutral
- Shoes – low heeled in black (not trainers or plimsolls)
- Headscarves worn for religious reasons should be plain black
- Hair accessories should be black
- Black knee length skirt
- Black trousers - loose fitting
- Pink Summer Blouse – short sleeve with rever collar (summer term only)



PE Uniform

- Pink School t-shirt with logo
 - Black 1/4 zip training top with logo
 - Black PE shorts with logo
- OR
- Black training pants with logo
 - Black/pink games socks with logo
 - Sports trainers (suitability at the discretion of the PE staff)
 - No plimsolls



SANCO

Sanco, the school uniform shop, is the sole provider of our uniform. They are a family run business, and their values on quality of uniform are exactly the same as ours.

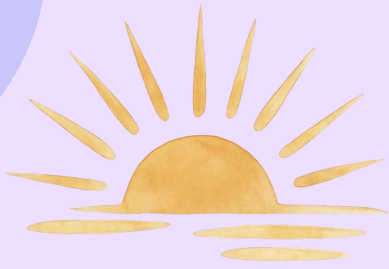
They currently have a shop in Hounslow at the following address:

Sanco, 60 Bell Road, Hounslow, TW3 3PB,

Tel: 020 8570 9990

Instead of visiting their store, uniform can be purchased online at

www.sanco.co.uk



THE SCHOOL DAY

TUTOR TIME 8:40AM - 9:10AM
PERIOD 1 9:10AM - 10:00AM
PERIOD 2 10:00AM - 10:50AM
BREAK 10:50AM - 11:05AM
PERIOD 3 11:10AM - 12:00PM
PERIOD 4 12:00PM - 12:50PM
LUNCH 12:50PM - 1:25PM
PERIOD 5 1:30PM - 2:20PM
PERIOD 6 2:20PM - 3:10PM
END OF SCHOOL 3:10PM



FUEL YOUR DREAMS

CATERING AND LUNCH TIME

Our canteen staff work tirelessly to deliver the best to our students. During breakfast, morning break and lunch our canteen serves healthy, freshly cooked meals and snacks daily. All meals are made on-site by skilled catering staff from fresh, sustainably sourced ingredients. Our aim is to supply pupils with good quality food, freshly cooked using fresh ingredients and offering good value for money at all times.

To help students to get a good start to the day we have been able to offer free breakfast for students who come in early. Students will be able to access a healthy breakfast with bagels available in our canteen every day absolutely free of charge. Please encourage your daughter to take up this free breakfast as it is a proven fact that food eaten first thing in the morning enhances concentration. We hope this gives sufficient assurances as to our proactive stance in how we feel a good quality catering service is to our students and the importance in making sure that all our students receive a healthy meal.

The facilities offered within our school dining hall are extremely good and the quality and choice of food offered is excellent. Since the introduction of our cashless tills, the ability to be able to pay online and with the use of biometric readers introduced some years ago, it makes the use of our dining hall an enjoyable experience in a modern environment.

Pupils who are eligible for Free School Meals automatically have their account credited each day, and they can use this allowance at lunch time. For students that are entitled to receive Free School Meals using the biometric readers makes the system 'invisible', so other students do not know who is claiming a free school meal.



As a cashless school, we now use Scopay to make payments online which gives the facility to pay for lunches along with school trips or anything else that has a cost implication. Scopay is a free facility and further details on how this system works and how to register are available on our website or if you would prefer to speak to a member of the finance department. No cash is accepted at school at all.

Students who prefer to bring packed lunch are welcome to use dedicated eating areas around the school and all students can purchase a smaller range of snacks and drinks that are available on a daily basis.

YEAR 7 CURRICULUM

At Brentford School for Girls, we understand that the move from primary to secondary school is a significant step, bringing new opportunities as well as understandable questions and nerves for both students and parents. Our priority is not only your daughter's academic success, but her confidence, wellbeing and sense of belonging as she grows with us. With this in mind, we have carefully designed our timetable in line with national guidelines to provide a broad, balanced and ambitious curriculum that steadily builds the knowledge, skills and independence she needs to thrive. Below, you can see the current allocation of time per subject, reflecting our commitment to supporting every student on her journey towards success.

CORE SUBJECTS: English Mathematics Science Literacy & Reading	4 lessons 5 lessons 4 lessons 1 lesson	CREATIVE ARTS: Art Design Technology	1 lesson 2 lessons
HUMANITIES SUBJECTS: Geography History Religious Studies	2 lessons 2 lessons 1 lesson	MODERN FOREIGN LANGUAGES: French/ Spanish	3 lessons
PERFORMING ARTS: Drama Music Physical Education	1 lesson 1 lesson 2 lessons	OTHER SKILLS: BLOSSOM/PSCHE	1 lesson

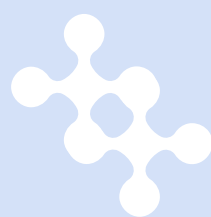
Below is an example of what your daughter's timetable may look like:

PERIOD	MONDAY	TUESDAY	WEDNESDAY	THURSDAY	FRIDAY
TUTOR TIME	Tutor	Tutor	Tutor	Tutor	Tutor
1	Technology	Maths	Maths	Science	Drama
2	Technology	PE	Science	English	Spanish
BREAK					
3	Maths	English	English	Music	PE
4	English	Literacy/Reading	Science	Blossom/PSCHE	History
LUNCH					
5	Maths	Spanish	RE	Art	English
6	Spanish	Geography	Geography	History	Science



Don't worry. You will not get lost or confused. All the transition events will help you. You will also have a member of staff attached to your class for the first couple of weeks to make sure you always find your way to where you need to be.

Timetables will be given out on your daughter's first day with us in September.



05 | OUR SHARED COMMITMENT

At Brentford School for Girls, our shared commitment is to fulfil our vision through everything we do, ensuring every student experiences the very best of BSfG.



Being a girls' school, we ensure our students develop the skills and qualities that help girls to thrive in all fields; from our thriving sports clubs that build teamwork and resilience, to developing confident speakers who use their voices with pride, we nurture ambition and self-belief in all areas of school life.

This happens not just in our curriculum, but in all the opportunities we have for our girls to develop, such as Women's Week, Diversity Week, and a rich programme of educational trips. We are a strong community and together we celebrate equality, broaden horizons, and ensure inclusion and success for all.

Together, we are dedicated to empowering every girl to achieve her potential and embody the very best of BSfG in school and beyond.





05 | OUR SHARED COMMITMENT

EXTRA CURRICULAR CLUBS

EXTRA CURRICULAR CLUBS

MONDAY	TUESDAY	WEDNESDAY	THURSDAY	FRIDAY
MORNING HOMEWORK CLUB (YR 7-11) 08.00-08.30 MS DOHERTY (T1)	MORNING HOMEWORK CLUB (YR 7-11) 08.00-08.30 MS DOHERTY (T1)	MORNING HOMEWORK CLUB (YR 7-11) 08.00-08.30 MS DOHERTY (T1)	MORNING HOMEWORK CLUB (YR 7-11) 08.00-08.30 MS DOHERTY (T1)	MORNING HOMEWORK CLUB (YR 7-11) 08.00-08.30 MS DOHERTY (T1)
FREE BREAKFAST CLUB (YR 7-13) 08.00-08.40 MS DAVIES (CANTEEN)	FREE BREAKFAST CLUB (YR 7-13) 08.00-08.40 MS DAVIES (CANTEEN)	FREE BREAKFAST CLUB (YR 7-13) 08.00-08.40 MS DAVIES (CANTEEN)	FREE BREAKFAST CLUB (YR 7-13) 08.00-08.40 MS DAVIES (CANTEEN)	FREE BREAKFAST CLUB (YR 7-13) 08.00-08.40 MS DAVIES (CANTEEN)
LUNCHTIME HOMEWORK CLUB (YR 7-13) 12.50-13.20 6TH FORM STUDENTS (T1)	DIVERSITY CLUB (YR 7-13) 08.40-09.10 MS ACHONWIRI (M4)	NETBALL (TEAM ONLY) 07.20-08.35 MS CLARKE - JEVROISE (NETBALL COURTS)	BASKETBALL (TEAM ONLY) 07.20-08.35 MR CLARKE - JEVROISE (CURIE GYM)	LUNCHTIME HOMEWORK CLUB (YR 7-13) 12.50-13.20 6TH FORM STUDENTS (T1)
ACCESS TO LIBRARY (YR 7-13) 12.50-13.20 MS O'SULLIVAN (LIBRARY)	FOOTBALL (TEAM ONLY) 07.20-08.35 MS CURR (ASTRO)	YEARBOOK CLUB (PREFECTS) 08.40-09.10 MS MILLER (P1)	LUNCHTIME HOMEWORK CLUB (YR 7-13) 12.50-13.20 6TH FORM STUDENTS (T1)	ACCESS TO LIBRARY (YR 7-13) 12.50-13.20 MS O'SULLIVAN (LIBRARY)
ART HOMEWORK CLUB (YR 7-13) 12.50-13.20 MS VINCENT (C7)	LUNCHTIME HOMEWORK CLUB (YR 7-13) 12.50-13.20 6TH FORM STUDENTS (T1)	LUNCHTIME HOMEWORK CLUB (YR 7-13) 12.50-13.20 6TH FORM STUDENTS (T1)	ACCESS TO LIBRARY (YR 7-13) 12.50-13.20 MS O'SULLIVAN (LIBRARY)	KARAOKE (YR 7-13) 12.50-13.20 MS MARTIN (A6)
FOOTBALL (YR 9-13) 12.50-13.20 MR GARNER (ASTRO)	ACCESS TO LIBRARY (YR 7-13) 12.50-13.20 MS O'SULLIVAN (LIBRARY)	ORIGAMI (YR 7-8) 12.50-13.20 MS O'SULLIVAN (LIBRARY)	FOOTBALL (YR 7-13) 12.50-13.20 MS MARTIN (A1/A2)	SPANISH HOMEWORK CLUB (YR 7-13) 12.50-13.20 MS NOLLMAN (E2)
HISTORY SOCIETY CLUB (YR 7-13) 12.50-13.20 MS CROWLEY (P6)	TEANES (YR 7-13) 12.50-13.20 MS ALEXANIAN (COURTS)	6TH FORM KARAOKE (YR 12-13) 12.50-13.20 6TH FORMERS (A5)	ROCKBAND (YR 7-13) 12.50-13.20 MS MARTIN (A1/A2)	MATHS H/W CLUB (YR 7-13) 13.00-13.20 MS MALEK (C4)
NETBALL (YR 7-8) 12.50-13.20 MS WARD (NETBALL COURTS)	6TH FORM EMOTIONAL SUPPORT CLUB (YR 12-13) 12.50-13.20 6TH FORMERS (T2)	PHYSICS CLUB (YR 10-13) 12.50-13.20 6TH FORMERS (M4)	AMNESTY INTERNATIONAL (YR 7-13) 12.50-13.20 6TH FORMERS (M1)	FOOTBALL (YR 7-13) 12.50-13.20 MS ELLIOTT (ASTRO)
BADMINTON (YR 7-8) 12.50-13.20 MS BALDY (PANKHURST GYM)	SIXTH FORM MATHS STUDY GROUP (YR 12-13) 12.50-13.20 6TH FORMERS (C8)	NETBALL CLUB (YR 7-13) 12.50-13.20 MS MARTIN (A6)	BSF LAW SOCIETY (YR 7-13) 12.50-13.20 MS BRIDGEMAN (THEATRE)	ACCESS TO LIBRARY (YR 7-13) 15.10-16.00 MS O'SULLIVAN (LIBRARY)
ACCESS TO LIBRARY (YR 7-13) 15.10-16.30 MS O'SULLIVAN (LIBRARY)	ARTS AND CRAFTS (YR 7-13) 12.50-13.20 6TH FORMERS (C6)	CHESS (YR 7-13) 12.50-13.20 MR WOODS (E2)	NUMERACY CLUB (YR 7-13) 13.00-13.20 MS BELL (M5)	YOGA CLUB (YR 7-13) 15.10-16.30 MS MCGANN (CURIE GYM)
FOOTBALL YR 9-11 (YR 9-11) 15.10-16.30 MS CURR (ASTRO)	FORMULA 1 CLUB (YR 7-13) 12.50-13.20 6TH FORMERS (T3)	DEBATE CLUB (YR 7-13) 15.10-16.30 MS MCGANN (M15)	CHESS CLUB YR 7-8 (YR 7-8) 12.50-13.20 MS DUVYU AKKORA (E2)	
SIXTH FORM DEBATE CLUB (YR 12-13) 15.10-16.30 6TH FORMERS (6TH FORM STUDY)	FOOTBALL (YR 7-13) 12.50-13.20 MS CHARBONNIER (ASTRO)	ORCHESTRA (YR 7-13) 15.10-16.30 MS MARTIN (A6)	BADMINTON (YR 6-11) 12.50-13.20 MS BELL (PANKHURST GYM)	
LATHS DANCE CLUB (YR 7-13) 15.10-16.30 GERDA (PANKHURST GYM)	ACCESS TO LIBRARY (YR 7-13) 15.10-16.30 MS O'SULLIVAN (LIBRARY)	BASKETBALL (YR 7-13) 15.10-16.30 MR CLARKE - JEVROISE (CURIE GYM)	PHOTOGRAPHY STUDIO TIME (YR 9-13) 12.50-13.20 MS CURTIS (C10)	
NETBALL YR 7-8 (YR 7-8) 15.10-16.30 MS WARD (NETBALL COURTS)	TRAMPOLINING YR 9-11 (YR 9-11) 15.10-16.30 MS CURR (CURIE GYM)	DEBATE CLUB (YR 7-13) 15.10-16.30 MS MCGANN (M15)	TAYLOR SWIFT CLUB (YR 7-13) 12.50-13.20 MS SMITHSON (M15)	
	SIXTH FORM BIOLOGY STUDY GROUP (YR 12-13) 15.10-16.30 6TH FORMERS (6TH FORM STUDY)	NETBALL YR 9-11 (YR 9-11) 15.10-16.30 MS CURR (NETBALL COURTS)	ESPORTS CLUB DIGITAL SCHOOLHOUSE (YR 7-13) 12.50-13.20 MS MACEY (C3)	
			ACCESS TO LIBRARY (YR 7-13) 15.10-16.30 MS O'SULLIVAN (LIBRARY)	
			PHOTOGRAPHY STUDIO TIME (YR 9-13) 15.10-16.30 MS CURTIS (C10)	
			BRENTFORD SINGERS (YR 7-13) 15.10-16.30 MS MARTIN (A6)	
			OSCE PE INTERVENTION (OSCE PE) 15.10-16.30 MS CURR (T4)	
			FOOTBALL (YR 7-8) 15.10-16.30 MR CLARKE (ASTRO)	

AMBITIOUS | CONFIDENT | FLEXIBLE | INQUISITIVE | REFLECTIVE

SPRING TERM 1

KEY
BEFORE SCHOOL CLUB
LUNCHTIME CLUB
AFTER SCHOOL CLUB

Extra curricular clubs are run every half term and are very popular. This gives your daughter the chance to get involved and meet students in her year and also older year groups. It allows your daughter to grow in confidence and expand her skills across subjects. It also gives the chance to get involved in activities which may not be offered on the curriculum. Extra curricular clubs are compulsory for all Year 7 to attend at least one club.



TRIPS AND VISITS

Throughout the year, we offer a wide range of carefully planned trips, visits and enrichment opportunities designed to enhance and extend the curriculum. These experiences bring learning to life, deepen understanding and allow students to explore subjects beyond the classroom in meaningful and engaging ways.

Each summer, we also host dedicated Activity Days, giving your daughter the opportunity to try something new, develop new skills and broaden her horizons. Whether through cultural visits, creative workshops, outdoor challenges or team-building experiences, these days are designed to inspire confidence, curiosity and a sense of adventure.



06 | PARTNERING WITH PARENTS

At Brentford School for Girls, we believe that strong partnerships with parents and carers are at the heart of every student's success.

We keep families informed and involved through regular communication, parent information evenings, workshops, celebration events and consultation meetings, ensuring that parents feel confident in supporting their child's learning journey.

We also value our role within the wider community and pride ourselves on our close links with local organisations in Brentford and across the London Borough of Hounslow. Through community projects, partnerships, careers events and local initiatives, students have opportunities to engage beyond the classroom, develop a sense of social responsibility and feel connected to the vibrant and diverse area in which they live.

OUR 6 'TOP TIPS' FOR PARENTS

1. ATTENDANCE

Time off school affects progress. Always ensure that your daughter arrives on time and eats a healthy breakfast as this supports concentration. We provide breakfast at school if needed free of charge.

2. SHOW INTEREST

Talk her through her timetable and talk about what she has learnt that day. Her journal will show you her timetable, homework timetable and any homework set that day. It will also be a method of communication between the Parent/Carer and teachers.

3. ENCOURAGING LEARNING BEYOND THE CLASSROOM

Plan family visits to museums, galleries or historical sites to bring learning to life. Many offer programmes linked to her studies, creating great opportunities for discussion at home. You can also support her further with high-quality online resources and educational apps.

4. SUPPORT

Support your daughter with her homework, but encourage independence — guide her learning rather than doing it for her. Help her establish a consistent routine so she can meet deadlines confidently. In Year 7, homework is carefully phased in to support students in developing strong study habits.

5. GET TO KNOW THE CURRICULUM

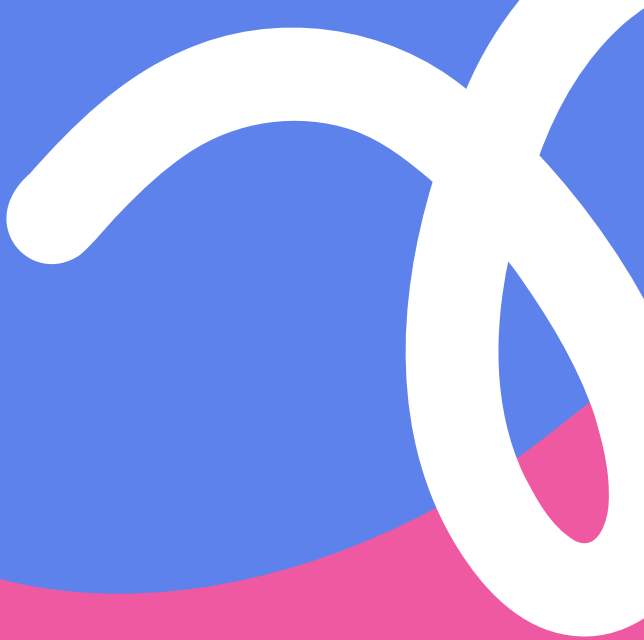
Use our curriculum guide, available online to support your daughter's progress. Head to our website www.brentford.hounslow.sch.uk then click the heading School Information and then sub-heading Curriculum.

6. SETTING UP FOR HOMEWORK SUCCESS

Having a box stocked with essential stationery — pens, pencils, highlighters, Post-it notes and a calculator — can make home learning much more effective. If additional support or IT access is needed, she can attend Homework Club or use the library each day, where facilities and guidance are available.

BRENTFORD SCHOOL FOR GIRLS

BRENTFORD 6th FORM



FOLLOW US ON SOCIAL MEDIA



@BRENTFORDSCHOOL



@BRENTFORDSCHOOLGIRLS



5 BOSTON MANOR ROAD, BRENTFORD, MIDDLESEX TW8 0PG



0208 8474281



GENERAL@BRENTFORD.HOUNSLOW.SCH.UK



WWW.BRENTFORD.HOUNSLOW.SCH.UK

SMALL SCHOOL, BIG AMBITION

