

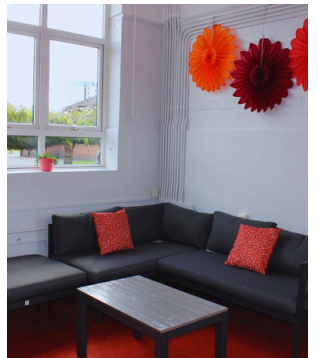
**Book  
Now**



**BRENTFORD SCHOOL FOR GIRLS**  
BRENTFORD & FORM



# FACILITIES FOR HIRE





# HOST YOUR NEXT EVENT AT BRENTFORD SCHOOL FOR GIRLS

## Looking for the perfect venue for your community group or business?

Brentford School for Girls offers a wide range of fantastic facilities available for hire!

Our spaces Include:

- Sports Halls
- Classrooms
- Main Hall
- Theatre
- Drama Studios
- Tennis Courts (daytime only)
- Outdoor Sports Pitch (daytime only)
- Cooking Classrooms
- Conference Rooms
- Dining Hall
- IT Facilities
- Textiles Rooms
- On-Site Coach/Bus Parking



Whether you're planning a sports event, conference, workshop, or community gathering, we've got the space to suit your needs.

Contact Us Today!

Email: [lettings@brentford.hounslow.sch.uk](mailto:lettings@brentford.hounslow.sch.uk)

We'd love to welcome you and help make your event a success!

# Discover some of our clubs



**SPEAK SMART**  
LET YOUR WORDS DO YOUR WORK

Running from Sat 1st March  
10:00-12:30  
(£35 per session)  
at Brentford School for Girls

**PUBLIC SPEAKING & DEBATING CLASSES FOR YOUNG LEARNERS (9-16YRS)**

Join our public speaking & debating course to sharpen skills, boost communication and build confidence.

**TASTER WEEK**  
MON-WED FEB HALF TERM  
10AM-3PM

[WWW.SPEAK-SMART.CO.UK](http://WWW.SPEAK-SMART.CO.UK)  
07891115147 | 07949297070





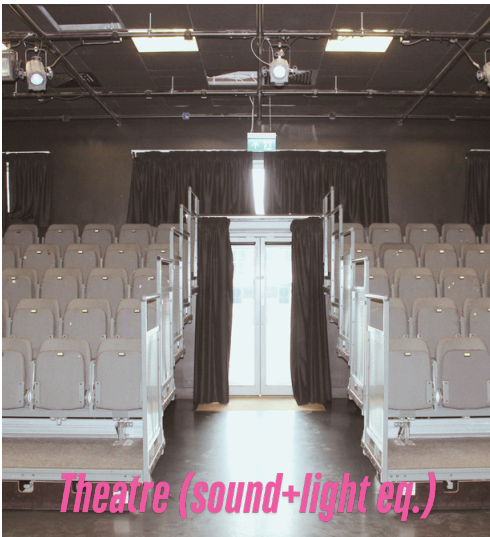
# *Great facilities for your events!*



*basketball court*



*Astroturf*



*Theatre (sound+light eq.)*



*study/ meeting areas*



**BRENTFORD SCHOOL FOR GIRLS**  
**BRENTFORD & FORM**

# *Small indoor area*



[www.brentford.hounslow.sch.uk/facilitiesforhire](http://www.brentford.hounslow.sch.uk/facilitiesforhire) CALL: 0208 847 4281

EMAIL: [lettings@brentford.hounslow.sch.uk](mailto:lettings@brentford.hounslow.sch.uk)



**BRENTFORD SCHOOL FOR GIRLS**  
**BRENTFORD & FORM**

# *Moles outdoor area*



# *Small indoors area*





# *Main Hall*





# *Dinning Hall*





**BRENTFORD SCHOOL FOR GIRLS**  
**BRENTFORD & FORM**

# *Pankhurst Gym*





# *D1 Food Tech Room*





**BRENTFORD SCHOOL FOR GIRLS**  
**BRENTFORD & FORM**

# *Classroom Westwood*



# *Classroom Teresa*





**BRENTFORD SCHOOL FOR GIRLS**  
**BRENTFORD & FORM**

# *Conference rooms*





**BRENTFORD SCHOOL FOR GIRLS**  
**BRENTFORD & FORM**

# ***SEND Hub***





**BRENTFORD SCHOOL FOR GIRLS**  
**BRENTFORD & FORM**

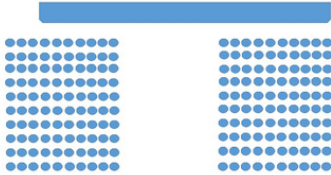
# *6th Form Study Area*





# SET UP STYLES

## ASSEMBLY

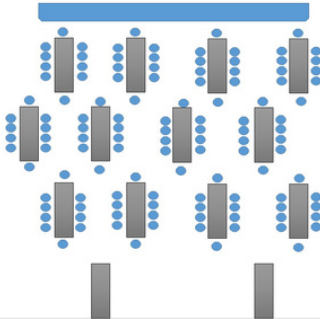


Maximum number of chairs is 240

## INTERVIEW STYLE



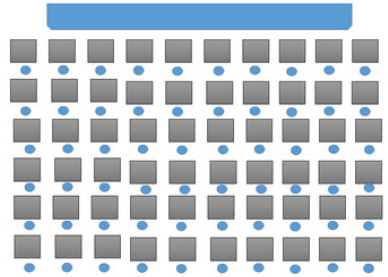
## BUSINESS PRESENTATION



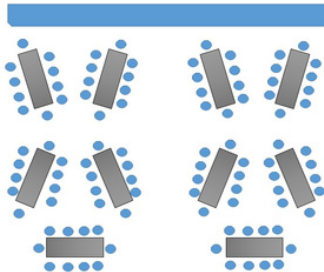
Maximum number of big tables is 15  
Maximum numbers of chairs around is 10

Maximum number of tables and chairs is 140

## EXAMS



## CAFE STYLE



Maximum number of big tables is 15  
Maximum numbers of chairs around is 30



# LETTINGS DETAILS

Room Name	Building	Dimensions	Description of Space	Capacity	Contents/Furniture	Equipment available to hire	Price range from
Standard Classroom				32 seated at tables	16 tables 32 chairs	Interactive Screen	
Large Classroom	Westwood	10.6x8.20 m		32 seated at tables	16 tables 32 chairs	Interactive Screen	£15
Computer Room	Teresa	12x7.30m		32 seated at PCs	32 tables 32 chairs	PCs Interactive screen	£15
Drama Room	Pankhurst	11.7x6.5 m					£15
Food Technology Room	Westwood	10.4x8.10m		9 works station (4 ppl each)			£20
Big Conference Room	Bronte	6.1x5.3 m		12 chairs (additional seats can be added)	Conference table conference chairs Kitchen area		£20
Small Conference room	Bronte	6.6x3.4m		10 -12 people	Conference table conference chairs		£15
Sports Gym	Pankhurst/ Curie	22x12x5 m					£30
Theatre	Pankhurst	13.80x8.8m		62 seats (additional seats can be added)		sound desk, lights	£25
Main Hall	Bronte	18x13.5x6.10 m	Large hall with Stage (5.5x7.3m)	240 seated theatre style		Chairs - up to 240 Large tressle tables - up to 16 Theatre lighting Projector and sound	£50
Dining Hall	Canteen	19x9.9m			tables and chairs		£30
Sixth Form Centre	Sixts form Centre	6.6x10.3			tables and chairs		
Sixth Form Centre (small)	Sixts form Centre	6.7x5.6 m			tables and chairs		
Astroturf							£40
Hub-SEN	Pankhurst	6.8x10.8 m			kitchenette, toilet;		£15
Library comuter room	Sixts form Centre	6x6.95m		18-20 people		18 PCs	£15

# HOW TO BOOK



email us your lettings enquiry  
[lettings@brentford.hounslow.sch.uk](mailto:lettings@brentford.hounslow.sch.uk)

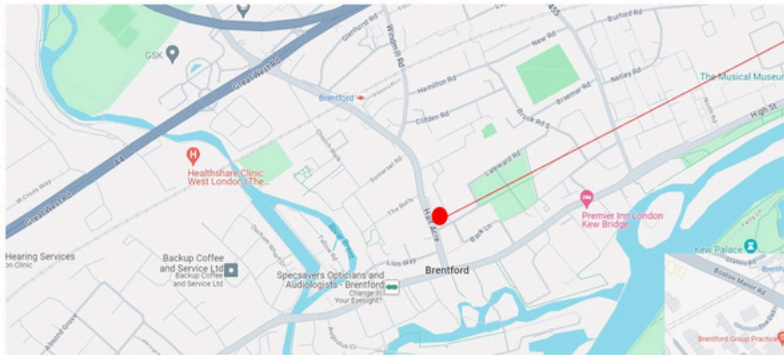


fill out lettings enquiry  
[www.brentford.hounslow.sch.uk/  
lettingsform](http://www.brentford.hounslow.sch.uk/lettingsform)

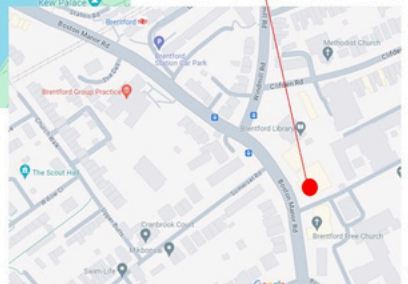
Contact Us Today!



**Brentford School For Girls: Very Good Transport Links to Hounslow/Ealing/Chiswick Areas**



**Brentford School For Girls  
5, Boston Manor Road,  
Brentford  
TW8 0PF**



**Brentford Rail Station – 3 minute walk (trains to Chiswick / Hounslow)**

**Buses within 2 minute walk of school gate:**

- E2 (Greenford-Brentford)**
- E8 (Hounslow – Ealing Broadway)**
- 195 (Hayes – Brentford)**

**Buses within 5 minute walk of school gate:**

- 235 (Sunbury – Brentford)**
- 237 (Hounslow – White City)**
- 267 (Fulwell – Hammersmith)**

**Buses within 8 minute walk of school gate:**

- 265 (Ealing – Kingston)**
- H91 (Hounslow – Hammersmith)**



## FOLLOW US ON SOCIAL MEDIA



  @BRENTFORDSCHOOL

 @BRENTFORDSCHOOLGIRLS

 5 BOSTON MANOR ROAD, BRENTFORD, MIDDLESEX TW8 0PG

 0208 8474281

 GENERAL@BRENTFORD.HOUNSLOW.SCH.UK

 WWW.BRENTFORD.HOUNSLOW.SCH.UK