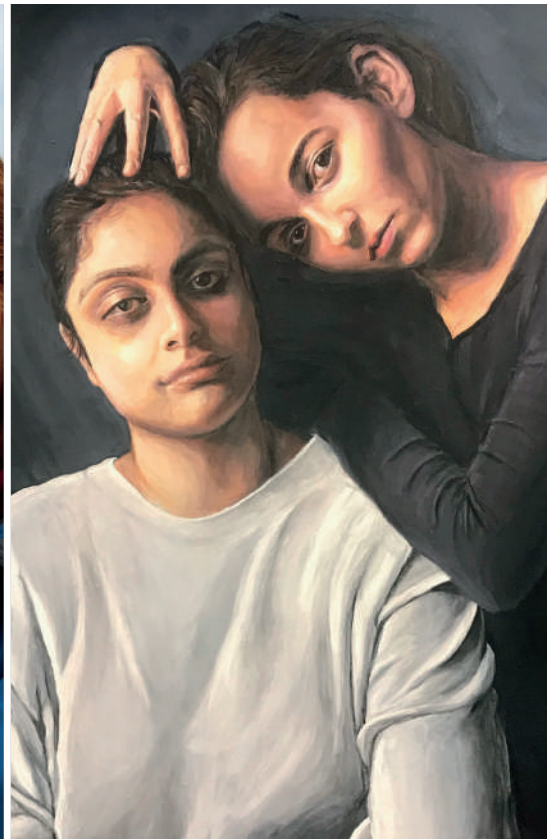


**WELCOME TO  
BRENTFORD**



**TAKE A CLOSER LOOK**

B  
R  
E  
N  
T  
F  
O  
R  
D



# An Aspirational Community

'WE ARE A COMMUNITY OF INDIVIDUALS WITH HIGH ASPIRATIONS AND EXPECTATIONS. AT BRENTFORD SIXTH FORM WE PROVIDE AN ENVIRONMENT THAT CHALLENGES YOU TO BE BETTER THAN YOU THINK YOU CAN BE, EXPERIENCE EXCITING OPPORTUNITIES TO GROW AS AN INDIVIDUAL AND THRIVE IN THE WORLD BEYOND SIXTH FORM.

Ms Agnihotri, Head of Sixth Form

Brentford sixth form is a successful and high achieving co-educational sixth form, inviting applications from ambitious and outstanding young women and men, inside and outside of the borough.

We are focussed on ensuring that you make outstanding progress during your journey with us and our students make more progress than they do in many other local sixth forms and colleges. We have one of the highest "value added" scores in the Borough.

Our mission is to equip you with the necessary qualifications, skills, qualities and experiences that are sought after by prospective universities and employers. Students choose us because we have a strong track record of academic success and we provide outstanding teaching support for all.

As well as outstanding teaching support, you will also benefit from our highly engaged and talented alumni network providing you with professional contacts to further enhance your future career opportunities.

Whether you wish to continue your studies at Oxbridge or a Russell Group University, or pursue a career straight from sixth form we have a pathway tailored to your needs. Our students go on to study and work in diverse and exciting industries.

Our Year 13 students continue to achieve impressively. The hard work and commitment of our students, supported by our dedicated and committed staff has ensured that our students have secured places at some of the most prestigious universities of their choice.

For more detailed information on university destinations of all our students please visit <https://www.brentford.hounslow.sch.uk>



KB

**GEOGRAPHY**



ID

**ARCHAEOLOGY**



MN

**ACCOUNTING & FINANCE**



EM

**INTERNATIONAL RELATIONS & HISTORY**



MB

**MEDICINE**



GB

**INTERIOR ARCHITECTURE**



# Building Your Future

'THE PROVISION OF EXTENSIVE OPPORTUNITIES TO DEVELOP OUR NETWORKING SKILLS FROM AN EARLY STAGE WERE INVALUABLE. I BUILT A NETWORK OF CONNECTIONS THROUGH THE VAST OPPORTUNITIES ADVERTISED BY THE CAREERS DEPARTMENT. SOME AMAZING HIGHLIGHTS IN MY CAREER DEVELOPMENT ARE GSK WORK EXPERIENCE, SPARK MENTORING, OPTOMETRY WORK EXPERIENCE, CAMBRIDGE UNIVERSITY SUMMER SCHOOL AND VOLUNTEERING INITIATIVES.

EVEN IN THE 2ND YEAR OF MY BIOMEDICAL STUDIES, I USE THESE IMPRESSIVE EXPERIENCES IN MANY INTERVIEWS TO DEMONSTRATE THE SKILLS I HAVE DEVELOPED. AS A RESULT, I GOT ACCEPTED TO

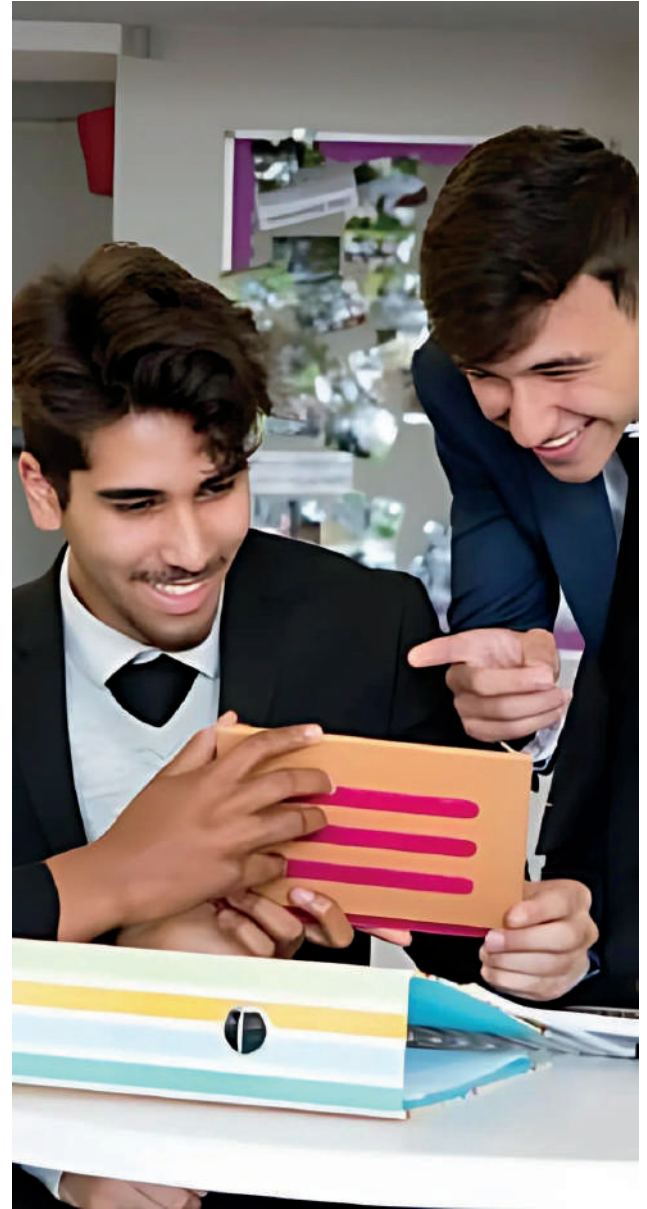
GSK THIS YEAR FOR A PLACEMENT BETWEEN MY 2ND & 3RD YEAR UNIVERSITY, WHICH I ATTRIBUTE GREATLY TO THE SKILLS I HAVE GAINED AT BRENTFORD 6TH FORM.'

Hadjar Maache, Graduate Biomedical Science student at St George's University of London.

An active and dynamic careers networking department ensures excellent and valuable links with local employers, universities and a highly skilled and knowledgeable alumni connections to help provide students with a head start in a highly competitive marketplace.

A wide variety of different careers events including our Higher Education 'Futures' fair are planned and executed to give you as much support as possible to explore career options and make informed choices.

Tutors and teaching staff are well trained in giving the best advice and guidance on future careers, university courses, Oxbridge applications and support students through the UCAS process. Our Newnham programme also identifies students with exceptional ability and aptitude early on in their studies to take part in the Extended Project Qualification .



## Providing Choice

WHEN CONSIDERING WHICH SUBJECT AND TYPE OF COURSE THAT IS RIGHT FOR YOU, WE ARE ABLE TO OFFER CURRICULUM OPTIONS THAT ARE EXCEPTIONALLY BROAD. YOU HAVE ACCESS TO OVER 30 COURSES, OFFERED EITHER AT BRENTFORD OR AT ONE OF OUR PARTNER SCHOOLS.

Brentford benefits from being part of a sixth form consortium with other local schools.

Most schools in the borough share a common timetable structure and we can negotiate.

places for our students at any one or more of these schools.

Students have the chance to meet and mix with other students and experience greater independence.

Explore the options available to you in more detail in our course information booklet on our website.

Visit [www.brentford.hounslow.sch.uk](http://www.brentford.hounslow.sch.uk)



# Course Options

A-LEVEL ART & DESIGN  
A-LEVEL BIOLOGY  
A-LEVEL BUSINESS STUDIES  
BTEC APPLIED HUMAN BIOLOGY  
A-LEVEL CHEMISTRY  
A-LEVEL CRIMINOLOGY  
A-LEVEL DRAMA & THEATRE  
A-LEVEL ENGLISH LITERATURE  
A-LEVEL FRENCH  
A-LEVEL FILM STUDIES  
A-LEVEL GOVERNMENT & A-LEVEL POLITICS  
A-LEVEL GEOGRAPHY  
BTEC HEALTH AND SOCIAL CARE  
A-LEVEL HISTORY  
A-LEVEL MATHEMATICS  
A-LEVEL PHILOSOPHY & ETHICS  
A-LEVEL PHYSICS  
A-LEVEL PHOTOGRAPHY  
A-LEVEL PSYCHOLOGY  
A-LEVEL SOCIOLOGY  
A-LEVEL TEXTILES  
A-LEVEL TRAVEL & TOURISM

I ENJOY CONSORTIUM BECAUSE OF THE FLEXIBILITY OF GOING TO DIFFERENT SCHOOLS, IT'S COLLABORATIVE AND DIVERSE.

AYUSHI D, YEAR 13

THE CONSORTIUM PROVISION HAS ALLOWED ME TO STUDY ALL THE SUBJECTS THAT I DESIRED TO DO, AS WELL AS ALLOWING ME TO ENTER A NEW ENVIRONMENT THAT HAS BEEN BOTH SUPPORTIVE AND HELPFUL IN MY ACADEMIC JOURNEY. IT HAS ALSO ALLOWED ME TO MAKE NEW FRIENDS AND EXPERIENCE DIFFERENT WAYS OF LEARNING.

SAARRAH T, YEAR 13

I ENJOY CONSORTIUM. IT ALLOWS ME TO EXPERIENCE TWO DIFFERENT SCHOOL ENVIRONMENTS, WHICH ENABLES ME TO WORK WITH DIFFERENT TEACHING STYLES AND PREPARE FOR THE FUTURE.

ADEL B, YEAR 13

\* The list below references courses that are available via the consortium school network and Brentford sixth form combined. Courses are subject to change and timetable dependent:

ECONOMICS  
FURTHER MATHS  
RELIGIOUS STUDIES  
ENGLISH LANGUAGE  
GERMAN  
SPANISH  
ITALIAN  
CHINESE  
MUSIC  
THEATRE STUDIES  
GRAPHICS & PRODUCT DESIGN  
COMPUTER SCIENCE  
BTEC SPORT  
BTEC CREATIVE MEDIA

# BRENTFORD



## Enriched Learning

HERE AT BRENTFORD SIXTH FORM STUDENTS ARE PREPARED FOR THEIR POST 18 PATHWAY, REGARDLESS OF THE FIELD THEY WANT TO PURSUE. THIS IS BECAUSE HERE AT BRENTFORD, STUDENTS CAN BECOME THE BEST VERSIONS OF THEMSELVES, DUE TO THE SKILLS BRENTFORD EQUIPS THEM WITH. BRENTFORD SIXTH FORM PROVIDES VARIOUS OPPORTUNITIES FOR ENRICHMENT AND WORK EXPERIENCE, WHICH HELPS STUDENTS ACQUIRE THE SKILLS NEEDED FOR THEIR FUTURE.

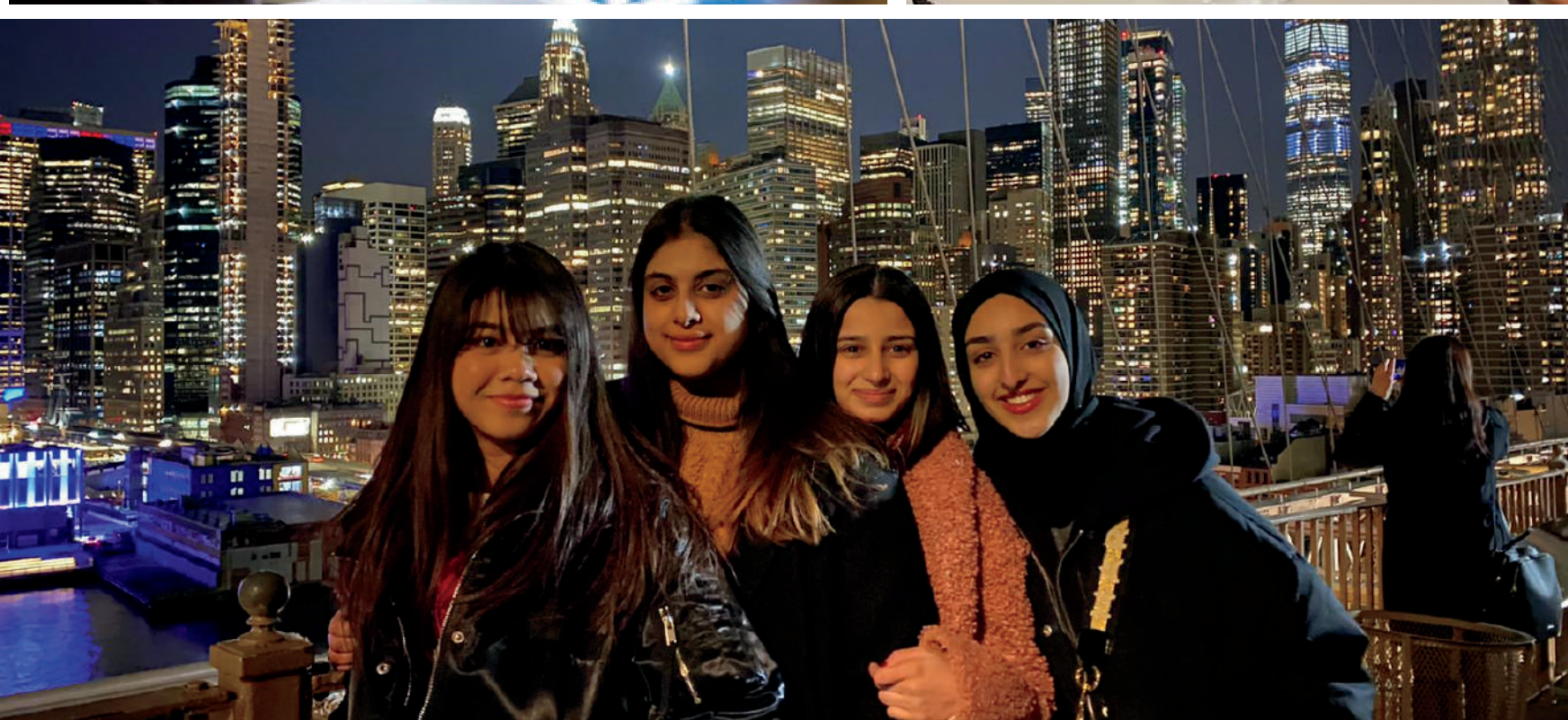
THE COMMUNITY ENVIRONMENT ALLOWS STUDENTS TO FLOURISH AND STAY MOTIVATED BECAUSE THEY FEEL SUPPORTED BY PEERS AND STAFF. MS AGNIHOTRI, TUTORS, TEACHERS AND OUR STUDENT LEADERSHIP TEAM ALL WORK COLLABORATIVELY TO MAKE BRENTFORD SIXTH FORM A BETTER PLACE FOR ALL STUDENTS.

Head Girl 24-25, Umara Vaz Pons Dinguana

Whatever you go on to do after sixth form, you will be expected to have done more than just study for your examined subjects.

A wide variety of leadership roles exist to enable you to develop important leadership skills and learning opportunities include museum, theatre, art gallery and exhibition visits and subject-specific excursions.

Students are encouraged to take part in extended learning opportunities in school including paired reading with younger students, working as a teaching assistant, debating, mentoring, in-class support or completing a range of work experience placements. All our students are also expected to take part in an off-site team building day to develop confidence and teamwork skills.







B  
R  
E  
N  
T  
F  
O  
R  
D

## Enhanced Facilities

BRENTFORD SIXTH FORM CONTAINS NUMEROUS FACILITIES AND RESOURCES THAT SUPPORT OUR EDUCATION AND OUR OWN PERSONAL INTERESTS. OUR SPACIOUS STUDY AREA HAS RESOURCES THAT ALLOW US TO REVISE AND COMPLETE OUR INDEPENDENT WORK. THE WELL-EQUIPPED CLASSROOMS ALLOW US TO FLOURISH IN THE LEARNING ENVIRONMENT AND WE HAVE NUMEROUS OTHER FACILITIES THAT ALLOW STUDENTS TO THRIVE IN DIFFERENT FIELDS SUCH AS ART, SCIENCE, THEATRE, MUSIC AND SPORTS FACILITIES. AFTER A LONG DAY OF ACADEMIC WORK, WE ALSO GET THE CHANCE TO UNWIND IN COUNTLESS EXTRACURRICULAR CLUBS, SOME SOLELY DEDICATED TO SIXTH FORMERS, ALLOWING US TO STRIKE A WORK LIFE BALANCE. - MARIAN P & ELAIKAH E, YEAR 12

The Brentford sixth form provides state-of-the-art facilities for study and social connections.

Students benefit from excellent specialist resources and facilities and are able to work independently in dedicated computer suites or in a supervised private study area where students can access support from a member of the sixth form support team.

All students have at least six dedicated study periods each week to facilitate outstanding progress.

The high ceilings and studious atmosphere make it an ideal place to complete independent silent study, whilst the café style social areas provide valuable opportunities to meet and interact with other students and share learnings.

Students also have access to an outstanding drama and dance theatre with a fully equipped music sound system, photographic and art studio and laboratory facilities and impressive all weather sports grounds that enable all our students to keep healthy and active - good for the mind, body and study!



# Outstanding Teaching

“BRENTFORD SIXTH FORM HAS A WIDE RANGE OF SUBJECTS TO OFFER STUDENTS, TAUGHT BY SUBJECT SPECIALIST TEACHERS OFTEN WITH INDUSTRY EXPERIENCE. THIS ALLOWS STUDENTS TO LEARN NOT ONLY THE THEORETICAL SIDE OF THE SUBJECT BUT ALSO EXPERIENCE REAL LIFE SCENARIOS AND CAREER FOCUSED TASKS. AT BRENTFORD WE ARE COMMITTED TO DEVELOPING OUR STUDENTS EDUCATION AND BUILDING A PASSION FOR THE SUBJECT WITH FREQUENT TRIPS, EXTERNAL PROFESSIONALS AND ENGAGING CURRICULUM”.

- MS AGNIHOTRI, HEAD OF SIXTH FORM

Outstanding teaching encourages a questioning approach in which all students can discuss, critique, debate and educate in an open and positive manner. The number of students in many of our A Level classes are limited to provide targeted, individual support from specialist subject teachers.

**‘TEACHING IN THE SIXTH FORM IS WELL PLANNED AND STUDENTS’ LEARNING IS SUPPORTED THROUGH REGULAR FEEDBACK’  
- OFSTED (2019)**





**'THERE IS A REAL COMMUNITY FEEL WHERE STUDENTS' DIFFERENCES ARE EMBRACED AND CELEBRATED' - OFSTED (2019)**

The ethos that every student counts and the family feel cultivated in the sixth form, ensure that Brentford is a nurturing and friendly place to be. The relationships between staff and students are excellent and continue way beyond their studies at Brentford.

A successful pastoral care programme has the right resource to help all students effectively navigate the challenges and opportunities that exist during your life in further education. Brentford sixth form values the importance that human connections play in ensuring students are able to perform to their full potential.

The strength of our pastoral team enables you to make excellent progress in your studies. A strong relationship between staff and students is a key ingredient. Students not only thrive and achieve their full potential, the individual is looked after as a whole.

## Your Voice

OUR SIXTH FORM TEACHERS ARE APPROACHABLE, RESOURCEFUL AND CONFIDENT IN THEIR SUBJECT AREA.

A-LEVEL SUBJECT TEACHERS HELP STUDENTS FULLY UNDERSTAND THE CHALLENGING CONTENT BEING TAUGHT, THAT WE CAN ACHIEVE OUR POTENTIAL.

NEHIR S, YEAR 13

HERE AT BRENTFORD, TEACHERS ARE BOTH KNOWLEDGEABLE AND BUILD A RAPPORT WITH STUDENTS; TWO KEY QUALITIES THAT HELP STUDENTS ACHIEVE THEIR AMBITIONS DURING THESE TWO CRITICAL YEARS OF EDUCATIONAL LIFE.

YEAR 13 STUDENT

OUR ENGLISH TEACHERS ARE PASSIONATE AND ENTHUSIASTIC ABOUT GOOD LITERATURE. WE LOVE IT AND WE WANT OUR STUDENTS TO APPRECIATE THE ARTISTRY INVOLVED IN GOOD WRITING AND THE IMPACT THESE WORKS CAN HAVE ON OUR THINKING, OUR OUTLOOK AND ON OUR LIVES. WE DON'T JUST LEARN ABOUT TEXTS; LEARNING ABOUT LITERATURE CAN TEACH US SO MUCH ABOUT OURSELVES TOO.

MS DOWNTON, HEAD OF ENGLISH



## Join our Community

Call: 020 8847 4281

Email: [general@brentford.hounslow.sch.uk](mailto:general@brentford.hounslow.sch.uk)

## Admissions & Applications

The application form for Brentford sixth form can be downloaded from our website.

[www.brentford.hounslow.sch.uk/6thform](http://www.brentford.hounslow.sch.uk/6thform)

Please complete and return to  
[reception@brentford.hounslow.sch.uk](mailto:reception@brentford.hounslow.sch.uk)

Any further enquiries relating to sixth form application process please contact  
Ms G Agnihotri  
[GAgnihotri@brentford.hounslow.sch.uk](mailto:GAgnihotri@brentford.hounslow.sch.uk)

<https://www.brentford.hounslow.sch.uk/sixthform>



[www.facebook.com/brentfordschoolgirls](http://www.facebook.com/brentfordschoolgirls)



[www.instagram/bsfgsixthform](http://www.instagram/bsfgsixthform)



[www.twitter.com/brentfordschool](http://www.twitter.com/brentfordschool)

## Finding Us

### ADDRESS

5 Boston Manor Road Brentford Middlesex, TW8 0PG

### BY RAIL

Brentford Station (South West Trains) is about 5 minutes from the school.

### BY BUS

Buses: H91, E2, E8, 65, 235, 237, 267

### BY TUBE

Boston Manor Station approximately 1 mile from the school

Bus from station: E8,105

B  
R  
E  
N  
T  
F  
O  
R  
D