



Welcome to Brentford School for Girls

Our Vision

Imagine the future Brentford Girl; she thrives on challenge and has a desire to fulfil her learning potential; she is able to think independently and is confident in her social and academic capability; she is emotionally aware and emotionally intelligent; she is capable and dependable; she is resourceful and inquisitive; she embraces the technological world as a global village and is ready to interact with others in the local and worldwide community; she accepts the welfare of others as her responsibility; she understands the need for sustainable living both locally and globally; she is ready for life in the future – whatever that may be. She is the centre of our vision and will remain the very core of our being and purpose.

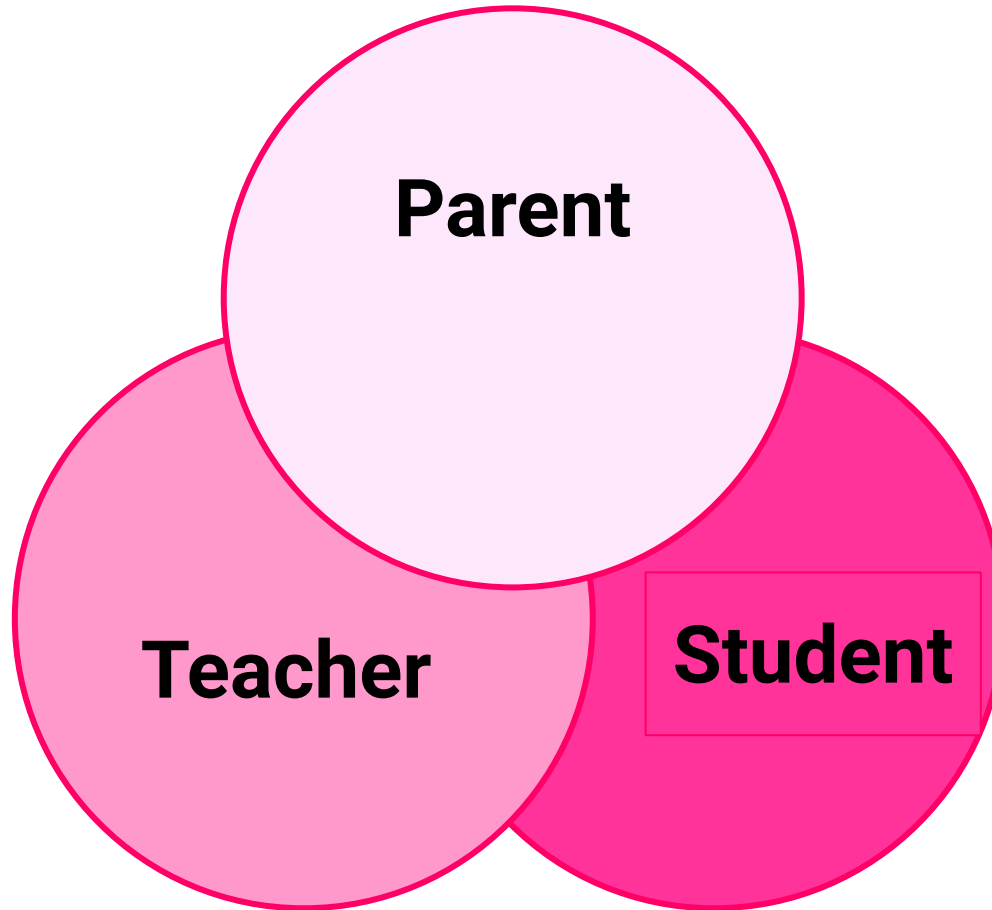
Aims of the evening

- To welcome you to our school community
- To provide information on your daughter's first half term at school
- To make you aware of key events/dates coming up this term
- How your child can succeed at school and what you can do to support them. (Booklet)
- To identify your daughter's tutor and understand their role in your daughter's journey here at Brentford

BRENTFORD SCHOOL FOR GIRLS

BRENTFORD 6th FORM

Academic Success



VISION | CREATIVITY | EXCELLENCE

BRENTFORD SCHOOL FOR GIRLS

BRENTFORD 6th FORM

Support in School

Tutors are first point of contact

Well-being Officer	Safeguarding Officer	Attendance Officer	Head of Year
Ms Davies 	Ms Stone 	Ms Shah 	Ms Ogunfidodo 

Support in School- All of the support below is at the discretion of the HoY

PET therapy

Every Friday

Rudy

School dog policy on the school website



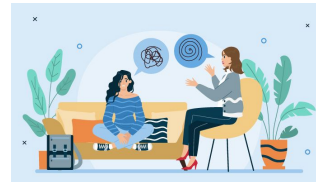
GROW

Therapeutic Coaching

The service provides young people with a safe and supportive space where they can work through any issues they are facing. The aim of GTC is to reduce levels of anxiety and distress, to empower young people to better manage their challenges and ultimately to develop their resilience and confidence.

School Counsellor

The school counsellor works with students in a school setting on a 1:1 basis to help them reach their full potential by providing care, support and a safe space to discuss sensitive issues.



LVA (LOVED, VALUED, ABLE) TRUST:

LVA is a charity that has worked with Brentford School for Girls since the Covid 19 Pandemic and subsequent lockdown. They have provided and continue to deliver quality, relevant, holistic and age appropriate workshops plus 1:1 mentoring to support and empower young people in all areas and aspects of their lives by building confidence, resilience and self-esteem.

Questions?

Students are expected to....

- Travel to and from in **full school uniform**
- Come **prepared to work hard** and make a **positive contribution** in all lessons.
- Bring the **correct equipment** to all lessons.
- Behaviour in a sensible and considerate manner at all times
- **Plan time effectively**, meeting all deadlines.
- Pro-actively **seek support**, from staff where help is required.
- Carry a Journal at all times, ensuring homework and deadlines are recorded
- Complete the required amount of homework or independent study each week.
- Ensure that the school site remains tidy and report any concerns where necessary.
- Ensure all books and folders are kept organised and in good order.

Rewards

We aim to encourage and celebrate the success of all students in all areas of school life.

Personal effort, commitment and achievement is acknowledged, rewarded and recorded.

Staff actively look for appropriate opportunities to praise students within and beyond the classroom as part of the focus on rewarding students for “going above and beyond”.

Staff actively encourage students to demonstrate the key characteristics of the school’s vision in their approach to education and in their conduct when representing the school in the local community.

1 House Point	2 House Points	3 House Points
Classroom		
<ul style="list-style-type: none"> • Good piece of homework or classwork • Good contribution in the lesson • Demonstrating or presenting to class • Good work as part of a group • Helping teacher or volunteering 	<ul style="list-style-type: none"> • Exceptional piece of homework or classwork • Outstanding effort in homework or classwork • Exceptional contribution in the lesson • Improvement in homework or classwork over a week • Improvement in punctuality over a week • Outstanding group work 	<ul style="list-style-type: none"> • Consistently good homework or classwork over a half term • Consistently good effort in homework or classwork over a half term • Sustained improvement in behaviour • Sustained improvement in punctuality
Form Time		
<ul style="list-style-type: none"> • 100% uniform over a week • Perfect journal (weekly check) • Helping tutor or volunteering 	<ul style="list-style-type: none"> • 100% attendance and punctuality over a week • Representing form in house assembly or sporting activity • No behaviour records in a week 	<ul style="list-style-type: none"> • Organising a form team, form fundraising etc. • Register monitor for a half term • Other tutor based responsibilities for a half term
Community		
<ul style="list-style-type: none"> • Helping staff 	<ul style="list-style-type: none"> • Taking responsibility as library volunteer, peer mentor etc. 	<ul style="list-style-type: none"> • Represent school in event or sports fixture • Contributing to house assembly • Helping in the library, peer mentor etc.

Questions?

Interim Progress Reports:

Interim Progress Report:

Issued **x3 times per year (December, March and June)**

We report on students' progress in relation to the intended curriculum in each subject.

Are they able to remember and apply the core knowledge that has been identified by each subject?

In relation to their intended curriculum student x is...

Exceeding	Meeting	Working towards	Requiring support
-----------	---------	-----------------	-------------------

Within this report you will also receive **teacher reflection** on students' approach to their assessment for learning and behaviour for learning

Assessment for Learning				Behaviour for Learning			
Written/Practical work	Contribution to questioning	Homework tasks	Engagement with feedback	Equipment	Active Listening	Respectful to others	Pride in presentation

Teachers will determine whether students meet the required expectations ALWAYS, SOMETIMES OR RARELY. Our intention is that this allows you to have meaningful conversations with your daughter about both areas of strength and where there may be areas for development.

Interim Progress Reports:

Within this report you will also receive **teacher reflection on students' approach to their assessment for learning and behaviour for learning**

Assessment for Learning				Behaviour for Learning			
Written/Practical work	Contribution to questioning	Homework tasks	Engagement with feedback	Equipment	Active Listening	Respectful to others	Pride in presentation

Teachers will determine whether students meet the required expectations ALWAYS, SOMETIMES OR RARELY. Our intention is that this allows you to have meaningful conversations with your daughter about both areas of strength and where there may be areas for development.

Assessment for Learning	
Written/Practical work	Written / practical work completed in lesson indicates that they are acquiring the required subject specific knowledge and skills in relation to the intended curriculum in each of their subjects
Contribution to questioning	Contributions to whole class questioning, peer and group discussion indicates that they are acquiring the required subject specific knowledge and skills in relation to the intended curriculum
Homework tasks	Homework tasks are regularly completed on time and to a high quality
Engagement with feedback	Student engages positively with formative feedback (both written and verbal) to improve their work / correct misconceptions

Behaviour for Learning	
Equipment	Regularly has appropriate equipment which allows them to fully engage in their learning
Active Listening	Actively listens to teacher explanation / instruction which allows them to fully engage in their learning
Respectful to others	Is respectful when listening / responding to the opinions of others
Pride in presentation	Completes set tasks to the best of their ability and with pride in presentation of their work

Assessment:

Is used regularly (both formally and informally) by teachers to **identify where gaps in knowledge / understanding** may be - and adapt the curriculum / teaching of individual lessons to close those gaps.

Formal Assessments:

- Take place in **calendared windows** with a timetable to ensure that students are not overwhelmed.
- For Year 7 the Formal Assessment window will take place during the **week beginning 20th May 2024**.
- Where appropriate - all access arrangements will be applied.
- **Whole School Revision weeks** - will take place at 3 points in the school year to build all students' confidence in revising effectively.

Tracking Progress at BSfG

SATS
(Y6)

Expected Progress



GCSEs
(Y11)

The grade that your daughter achieved in her Year 6 SATS is used to project targets for her for the end of Year 11.

Each student at Brentford School for Girls is set a GCSE target for each of their subjects based on Fischer Family Trust (FFT) estimates. FFT is non-profit organisation commissioned by the Department for Education that estimates potential individual performance based on how students of similar ability on entry (at the end of Key Stage 2) perform nationally. FFT provide estimates with varying degrees of challenge and we **use FFT 20 as the basis of our Key Stage 4 targets which is based on the progress seen in the top 20% of schools nationally.**

Using this information we can plot end of year benchmarks for each student. We are then able to monitor their progress along toward this benchmark, ensuring that considered and timely intervention is put in place to enable students in all year groups to make the necessary progress towards outstanding individual outcomes. **We are clear that the target is a floor - not a ceiling. Students at BSFG consistently exceed their target by at least 1 grade placing them in the top 10%+ of students nationally based on their progress from starting point.**

Assessments/ Tracking Progress at BSfG

9	A*
8	A
7	B
6	C
5	D
4	E
3	F
2	G
1	U
U	U

The new assessment scale runs from 1 (lowest) to 9 (highest). The table below shows the new GCSE scale alongside its' equivalent 'old' GCSE letter.

A grade 4 is considered to be a good pass and what employers will be expecting students to have achieved in maths and English.

A grade 5 is considered to be a strong pass and is typically the threshold needed to study A Level / Level 3 courses at post 16.

Questions?

Homework

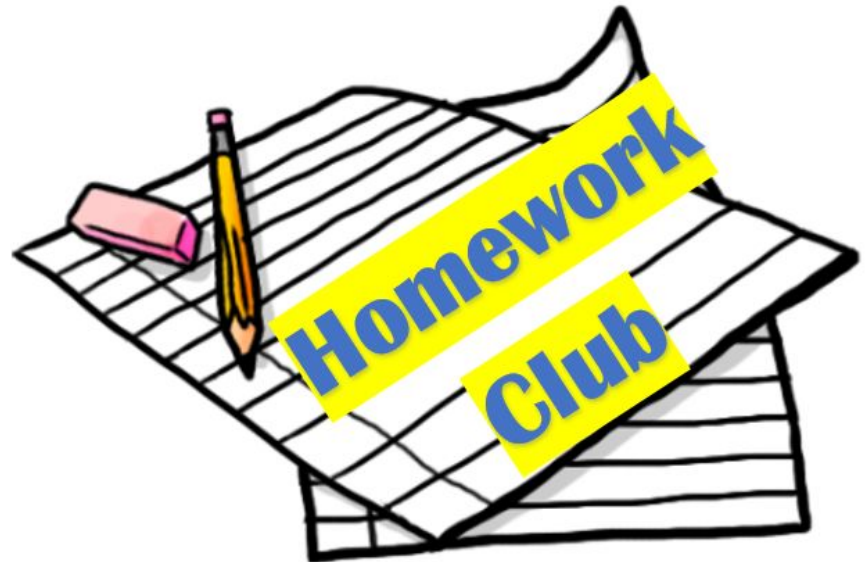
1st Half Term 2023 -2024					
	7AM	7CN	7FL	7IN	7RF
Monday					
	Science	Science	Science	Technology	Technology
Tuesday					
	English	English	English	English	English
Wednesday					
	History	Geography	Geography	History	History
Thursday					
	Technology	Technology	Technology	Science	Science
Friday					
	Maths	Maths	Maths	Maths	Maths

Homework

2nd Half Term 2023 -2024					
	7AM	7CN	7FL	7IN	7RF
Monday					
	Science	Science	Science	Technology	Technology
	Spanish	RE		RE	Drama
Tuesday					
	English	English	English	English	English
			French	Spanish	
Wednesday					
	History	Geography	Geography	History	History
		Drama			
Thursday	RE			RE	
	Technology	Technology	Technology	Science	Science
		Spanish	Drama		French
Friday					
	Maths	Maths	Maths	Maths	Maths
	Drama		RE	Drama	

Homework Club

Every morning and
lunchtime in T1



BRENTFORD SCHOOL FOR GIRLS

BRENTFORD 6th FORM

BRENTFORD SCHOOL FOR GIRLS EXTRA CURRICULAR CLUBS

MONDAY	TUESDAY	WEDNESDAY	THURSDAY	FRIDAY
MORNING HOMEWORK CLUB (YR 7-11) 07.00-07.50 MS DOHERTY (T1)	MORNING HOMEWORK CLUB (YR 7-11) 07.00-07.50 MS DOHERTY (T1)	MORNING HOMEWORK CLUB (YR 7-11) 07.00-07.50 MS DOHERTY (T1)	MORNING HOMEWORK CLUB (YR 7-11) 07.00-07.50 MS DOHERTY (T1)	MORNING HOMEWORK CLUB (YR 7-11) 07.00-07.50 MS DOHERTY (T1)
FREE BREAKFAST CLUB (YR 7-13) 08.00-08.50 MS PEARCE (CANTEEN)	FREE BREAKFAST CLUB (YR 7-13) 08.00-08.50 MS PEARCE (CANTEEN)	FREE BREAKFAST CLUB (YR 7-13) 08.00-08.50 MS DAVIES (CANTEEN)	FREE BREAKFAST CLUB (YR 7-13) 08.00-08.50 MS DAVIES (CANTEEN)	FREE BREAKFAST CLUB (YR 7-13) 08.00-08.50 MS DAVIES (CANTEEN)
LUNCHTIME HOMEWORK CLUB (YR 7-11) 12.50 - 13.25 6TH FORM STUDENTS (T1)	LUNCHTIME HOMEWORK CLUB (YR 7-11) 12.50 - 13.25 6TH FORM STUDENTS (T1)	MINDFUL MILE (YR 7-13) 08.15-08.40 MS PEARCE & MS WILLIAMS (ASTRO)	LUNCHTIME HOMEWORK CLUB (YR 7-11) 12.50 - 13.25 6TH FORM STUDENTS (T1)	LUNCHTIME HOMEWORK CLUB (YR 7-11) 12.50 - 13.25 6TH FORM STUDENTS (T1)
ACCESS TO LIBRARY (YR 7-13) 12.50-13.25 MS O'SULLIVAN (LIBRARY)	ACCESS TO LIBRARY (YR 7-13) 12.50-13.25 MS O'SULLIVAN (LIBRARY)	E SPORTS CLUB (YR 7-13) 12.50-13.20 MR MASRI (T2)	FOOTBALL (YR 7-13) 12.50-13.20 MR ROWELL (ASTRO)	ACCESS TO LIBRARY (YR 7-13) 12.50-13.25 MS O'SULLIVAN (LIBRARY)
BASKETBALL CLUB (YR 7-13) 12.50 - 13.20 MS BARAKAT (CURIE GYM)	FRENCH/SPANISH CLUB (NEW STUDENTS ONLY) 12.50-13.20 MS LUNA (B1)	YOGA (YR 12-13) 12.50-13.20 MS JOYNAT (A4)	CHESS CLUB (YR 7-13) 12.50-13.25 MR IRONS (M2)	MATHS GAMES (YR 7-9) 12.50-13.20 MS NOIKUMANA (C3)
NETBALL (YR 7-8) 12.50-13.20 MS GIDDENS (PANKHURST GYM)	SCIENCE DEBATE (YR 9/10 HAPS) 12.50-13.20 MS BELL & MS BROWN (M1)	FOOTBALL (YR 7-13) 12.50-13.20 MS CURR (ASTRO)	DODGEBALL (YR 7-13) 12.50-13.20 MR DEXTER (PANKHURST GYM)	FOOTBALL (YR 7-13) 12.50-13.20 MS VAN EEDEN (ASTRO)
FOOTBALL (YR 7-13) 12.50-13.20 MS CHARBONNIER (ASTRO)	ORIGAMI (YR 7-13) 12.50-13.20 MS O'SULLIVAN (LIBRARY)	NETBALL (YR 9-11) 12.50-13.20 MS GIDDENS (PANKHURST GYM)	ARTS AWARD CATCH UP (YR 7-13) 12.50-13.20 MS WELSH (D2)	DUKE OF EDINBURGH AWARD (SELECTED STUDENTS) 12.50-13.20 MS GIDDENS (PANKHURST GYM)
FRENCH & GERMAN HWK CLINIC (YR 9-11) 12.50-13.20 MS MEPHAM (B4)	FOOTBALL (YR 7-13) 12.50-13.20 MS CURR (ASTRO)	CHESS CLUB (YR 7-8) 12.50-13.20 MS DUYGU AKKAYA (C4)	DIVERSITY & INCLUSION (YR 7-13) 12.50-13.20 MS AGNIHOTRI (M1)	STEP INTO DANCE - HIP HOP (YR 7-13) 15.10-16.10 MS MARSH (THEATRE)
ENTERPRISE CLUB (YR 7-13) 15.10-16.10 MR MAY (D4)	BADMINTON (YR 7-11) 12.50-13.20 MS BALDY (CURIE GYM)	ECO CLUB (YR 7-13) 12.50-13.20 MS TOOLEY (P4)	KS4 HISTORY HWK CLUB (YR 9-11) 12.50-13.20 MS CHAGGAR (P5)	PUZZLE CLUB (YR 7-13) 15.10-16.10 MS MALEK (C9)
ACCESS TO LIBRARY (YR 7-13) 15.10-16.30 MS O'SULLIVAN (LIBRARY)	TENNIS (YR 7-13) 12.50-13.20 MS ALEXANIAN (TENNIS COURTS)	TRAMPOLINING (YR 7-13) 15.10-16.10 MS CURR (CURIE GYM)	SCIENCE CREST AWARD CLUB (YR 7-8) 12.50-13.20 MR GARNER & MS KHALID (M6)	
SCHOOL PRODUCTION (YR 7-13) 15.10-16.30 MS MARSH (THEATRE/ MAIN HALL)	VIOLIN (YR 7-13) 15.10-16.10 MS JONES (A6)	NETBALL (YR 7-13) 15.10-16.10 MS GIDDENS (PANKHURST GYM)	WRITING CLUB (YR 7-13) 12.50-13.20 MR HOLLOWAY (BP4)	
	GCSE PE INTERVENTION (GCSE PE STUDENTS) 15.20.16.10 MR DEXTER, MS CURR & MS GIDDENS (T1)	ARTS AWARD CLUB (YR 7-13) 15.15-16.10 MS WELSH (D2)	AMNESTY INTERNATIONAL (YR 7-13) 12.50-13.20 MS PARTINGTON & MS KHAN (M16)	
	SELF DEFENCE (YR 7-12) 15.20-16.30 COACH (PANKHURST GYM)	VIOLIN (YR 7) 15.20-16.10 MS JONES (A6)	ART HWK CLUB (YR 7-13) 12.50-13.20 MS VINCENT (C7)	
	SCHOOL PRODUCTION (YR 7-13) 15.10-16.30 MS MARSH (THEATRE/ MAIN HALL)	ART CLUB (YR 7-13) 15.20-16.20 MS CURTIS & MS KENNELLY (C7)	ACCESS TO LIBRARY (YR 7-13) 15.10-16.30 MS O'SULLIVAN (LIBRARY)	
		YOGA (YR 7-13) 15.20-16.20 MS JOYNAT (A4)	ROWING CLUB (STUDENTS SIGNED UP) 15.15-16.30 KEANE ROWING	
		GCSE FILM STUDIES (GCSE FILM STUDIES STUDENTS) 15.10-16.10 MR HOLLOWAY (BP4)		

AUTUMN TERM 1

KEY
BEFORE SCHOOL CLUB
LUNCHTIME CLUB
AFTER SCHOOL CLUB

AMBITIOUS | CONFIDENT | FLEXIBLE | INQUISITIVE | REFLECTIVE

VISION | CREATIVITY | EXCELLENCE

Questions?

What's to come...

- Monday 25th September House Competition- International Languages Day treasure hunt
- Wednesday 27th September House Competition- Football
- Thursday 28th September Year 7 Shrek Trip (payment made via scopay)
- Monday 2nd October- Start of Black History Month
- Thursday 5th October Open Evening (6:00-8:30pm)
- Friday 6th October INSET day (School closed to students)
- Friday 20th October Wear it pink day (payment made via scopay)

Who to contact?

7 Ambitious: Ms Ella Partington

epartington@brentford.hounslow.sch.uk

7 Flexible: Ms Hapsa Khalid

hkhalid@brentford.hounslow.sch.uk

7 Inquisitive: Ms Samantha Jones

sjones@brentford.hounslow.sch.uk

7 Confident: Ms Van Eeden

cvaneeden@brentford.hounslow.sch.uk

7 Reflective: Ms Ndikumana

cndikumana@brentford.hounslow.sch.uk

Questions?

Evaluation

Thank you so much for your time this evening. We hope you found it informative.

Please fill out an evaluation form and drop it in the box as you leave.



Thank you