

Here is a new project based on the themes of

DISTORTION & DISGUISE

Please look at the ideas that you can copy and/or make your own responses to while you are at home.

Be experimental, imaginative and inventive! If you do not have certain materials what could you use instead? This is a time for you to open your minds and to create. Recycle materials and be as explorative as you wish. I hope that you enjoy this, keep your work safe as your teachers look forward to seeing your projects.

MISS STORER

You will not have everything that you would want to use at home. Be inventive and imaginative and work with what you do have.

If you have any type of tape, double it back on its self (make a ring) and it will be double sided tape
Porridge (wheat) is an alternative to glue and so is flour and water. These are quite messy but do work so just use sparingly.

If you are using felt tip pens and the colour runs out, add a little vinegar into the top end (not the nib)

If you don't have things look in your recycling box – a net which oranges come in is a great resource for the hat task

If you don't have a sketch book, you could use an old book and stick you work inside it. If you use emulsion(thick white paint) you can whitewash pages and draw in rollerball pen but always ask an adult first!

You can paint with tea and coffee, food colouring, some spices dye paper or dye for clothes, boiled vegetable skins such as red onion can create natural dye and colour to paint with. You only need one colour and add more water to make it lighter. Make-up brushes, sponges for larger area and, sticks can be good for making lines. Decorators paint brushes and house hold Emulsion can be good resources.

If you have acrylic paint you can add chalk powder, sawdust, sand, glitter, soil, small stones to it to create texture. Use a piece of cardboard or old store card so that you do not ruin your brushes when you apply the paint.

TIPS

Use your materials sparingly as you may not be able to replace them



WRAPPING

Objects can take on interesting shapes and capture light differently once they are wrapped.

You could wrap in cloth or plastic and use tape or string or rubber bands.

It is a different way to view our regular objects. Try drawing the new shape and details using pencil, coloured pencil or paint to respond.



HIDDEN FIGURES

- **YOU CAN CREATE A PORTRAIT OF YOURSELF, YOU MAY CHOOSE TO DRESS UP OR DRAW YOURSELF AS YOU ARE.**
- **YOU COULD COPY THE PEACOCK FEATHER OR REPLACE IT WITH AN OBJECT OF YOUR OWN CHOICE.**



FRACTURING

- If you have magazines or photos you could try these collages.
- If you do not have magazines, draw out the composition = spaces used in the artwork above. Draw from your phone different photos of yourself or draw sections of your face into each space.

SCREW UP/FOLD IMAGES

- **FIND A PICTURE FROM A MAGAZINE SCRUNCH IT UP A LITTLE.**
- **DRAW OUT THE SPACES FIRST**
- **ADD THE FEATURES INTO THE SPACES**



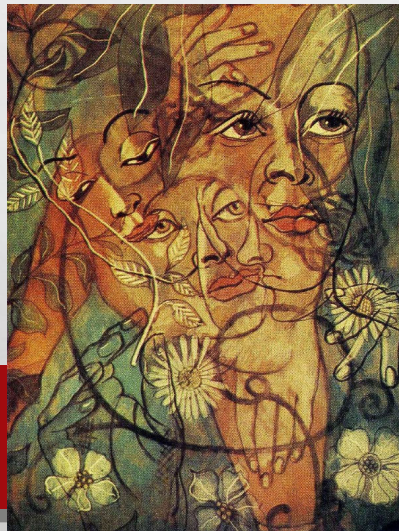


COLLAGE

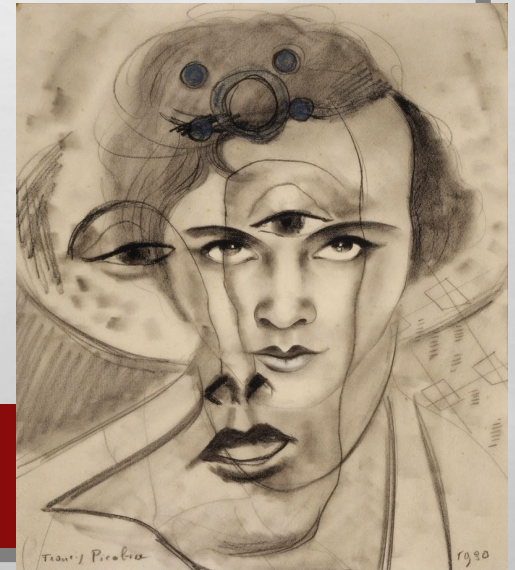
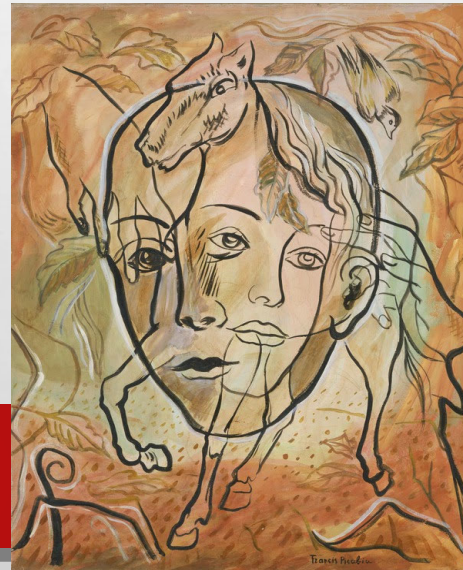
- **IF YOU HAVE SCISSORS, GLUE AND MAGAZINES OR NEWSPAPER YOU COULD TRY THIS**
- **ONCE YOU HAVE CREATED YOUR COLLAGE DRAW IT ONTO PAPER (THE INSIDE OF CEREAL BAR BOX WILL DO) USE ANY TYPE OF PEN OR PENCIL TO RECORD WHAT YOU SEE**

Look through magazines or at photographs and overlay images like the artist Francis Picabia

Francis Picabia



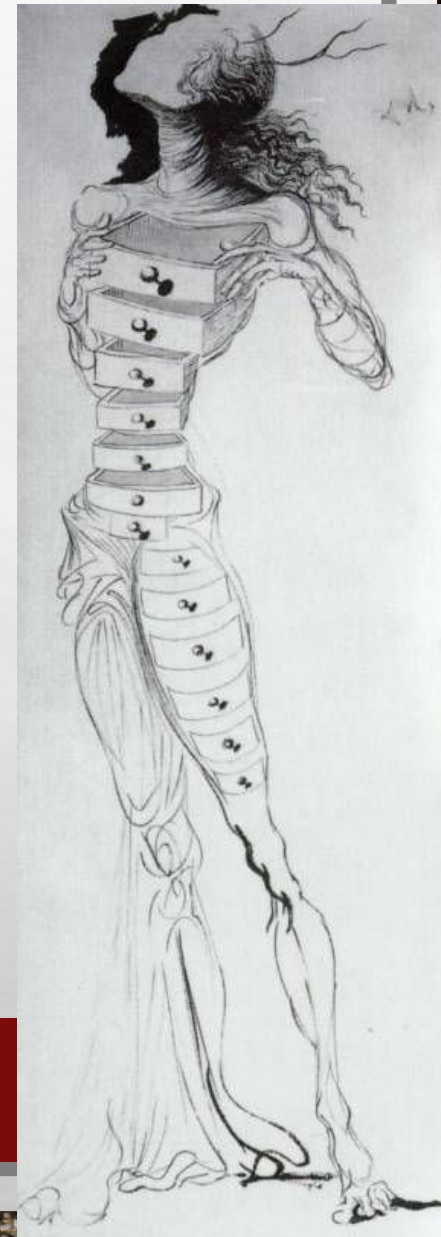
Born	Francis-Marie Martinez Picabia 22 January 1879 Paris
Died	30 November 1953 (aged 74) Paris
Nationality	French
Known for	Painting
Notable work	Amorous Parade
Movement	Cubism , Abstract art , Dada , Surrealism



Surrealism



Salvador Dalí



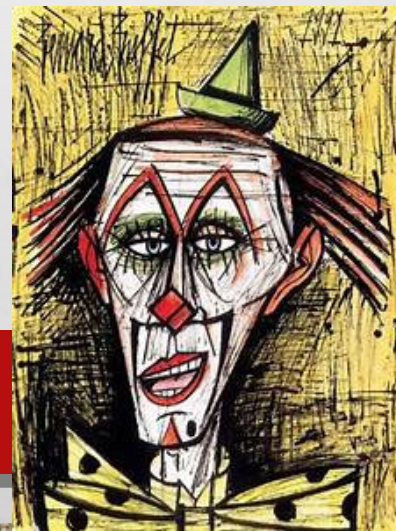
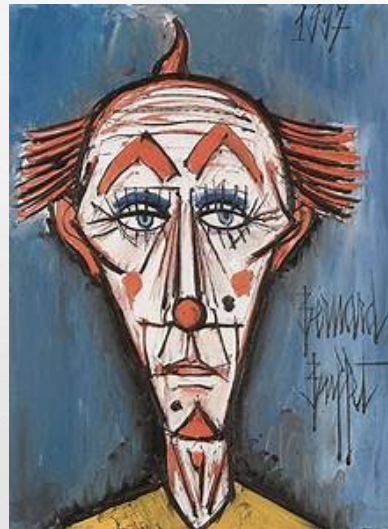
Salvador Dalí ([da:li](#)) Spanish: 11 May 1904 – 23 January 1989)

Dalí a Spanish [surrealist](#) artist. Born in [Figueres](#), [Catalonia](#), Dalí was a skilled artist [draftsman](#), best known for the striking and bizarre images in his work. His [painterly](#) skills are often attributed to the influence of [Renaissance](#) masters. His best-known work, [The Persistence of Memory](#), was completed in August 1931, and is one of the most recognisable Surrealist paintings. Dalí's expansive artistic repertoire included film, sculpture, and photography, at times in collaboration with a range of artists in a variety of media.

TASK: Look around your house, what could you combine to make a response to Dalí's work

BERNARD BUFFET WAS A PAINTER FAMOUS FOR HIS WORK OF CLOWNS

You could use face paints or make-up. Make yourself into a picture inspired by buffet or draw out a face and design your own Bernard Buffet clown from features within his work (a lip pencil or eye liner is good for fine detail).



ASSEMBLING OBJECTS TO GO 3D

- **ASSEMBLAGE IS LIKE COLLAGE. IN A COLLAGE WE TAKE PICTURES AND STICK THEM TOGETHER. IN ASSEMBLAGE WE TAKE OBJECTS AND STICK THEM TOGETHER.**
- **MAKING A HEAD DRESS MAKES PEOPLE ENGAGE WITH WHAT YOU HAVE MADE. YOU CAN ALSO USE IT FOR A VERY CREATIVE PHOTO SHOOT.**
- **THINK OF A THEME FOR YOUR PROJECT. THAT WILL GUIDE YOU IN YOUR DECISIONS.**
- **LOOK AT OBJECTS WITH NEW EYES. DO YOU SEE LOVELY DETAILS THAT WILL ADD TO YOUR PROJECT? HOW CAN YOU DISTORT IT TO MAKE IT WORK FOR YOU? CAN YOU TURN IT AROUND AND UPSIDE DOWN? CAN IT CURL, BEND, BE RIPPED?**

Create yourself a hat/head piece inspired by Alice in Wonderland



Easy Queen of Hearts Costume

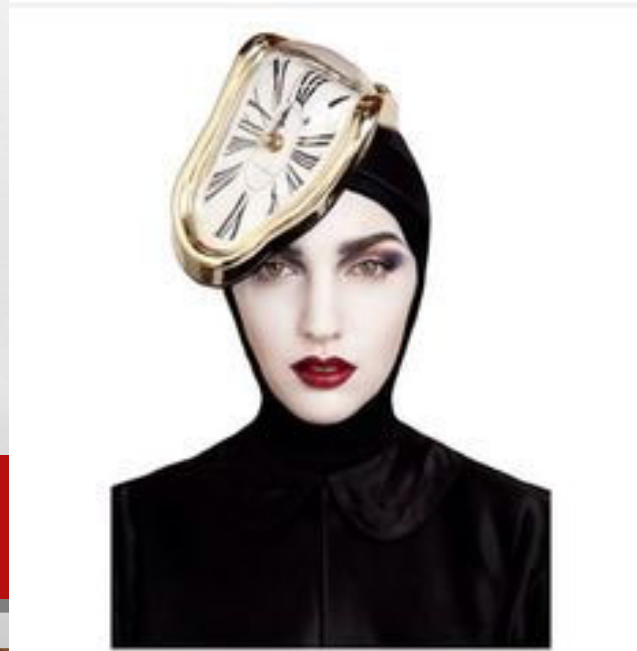




Design and make you own hat. If you have objects that you could adapt use them.

Take photos , draw from observation, try objects on your head and draw in the mirror.

Keep your hat sculpture safe





Ready –Made Sculptures

You may have toys in your house that remind you of Dali's surrealist creation

You could recycle or upcycle by using things which no-longer work and make them into a ready-made sculpture.



Photograph your sculpture and draw your observations from all four sides

Lobster telephone by Salvador Dali

This is two objects which already existed and they are stuck together to create a 'ready-made' sculpture