



C/W

Africa – A Changing Continent



24/04/2020



Kenya – what is it like?

L.O. To describe the country of Kenya and the different people and environments within the country

Starter:

Where is Kenya? - Use the two maps to help you write a geographical description of its location on the worksheet

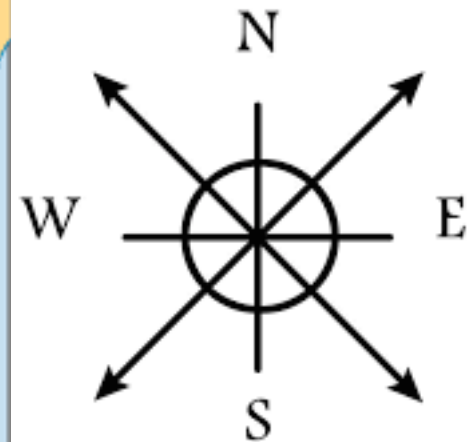
Remember:

Compass directions

Which continent?

Which countries border it?

Which ocean is next to it?





C/W

Africa – A Changing Continent



24/04/2020



Kenya – what is it like?

Look at the next seven slides that show photographs of Kenya

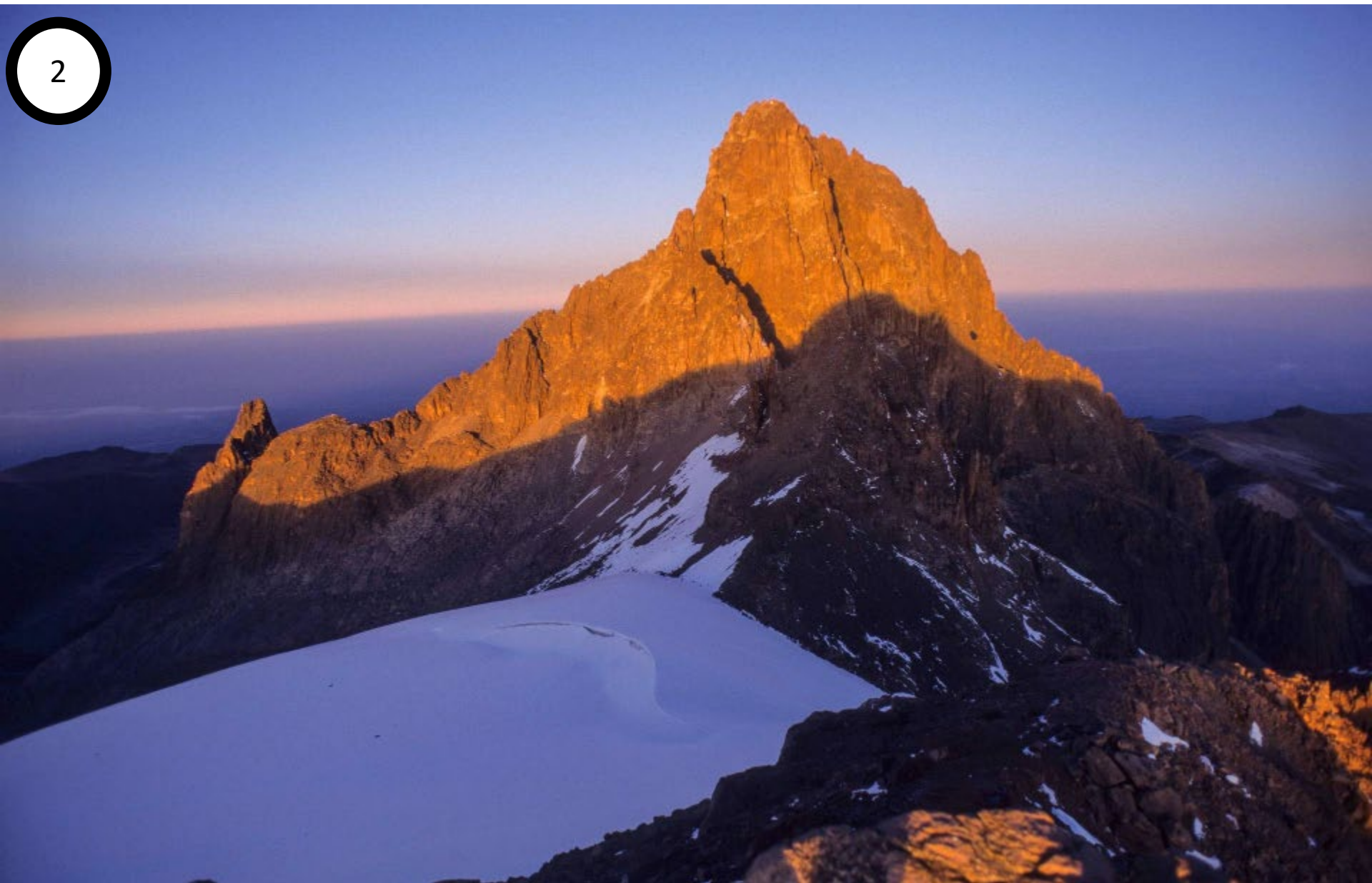
When you look at each photograph make notes on the following points
on the worksheet:

1. Describe what you can see in the photograph –
use as much geographical language as you can
2. Is it what you expected to see in Kenya?

**Extension: Which picture did you find easiest/hardest to write
about? Do any of the pictures make you want to visit Kenya?**

1

















C/W

Africa – A Changing Continent



24/04/2020



Kenya – what is it like?

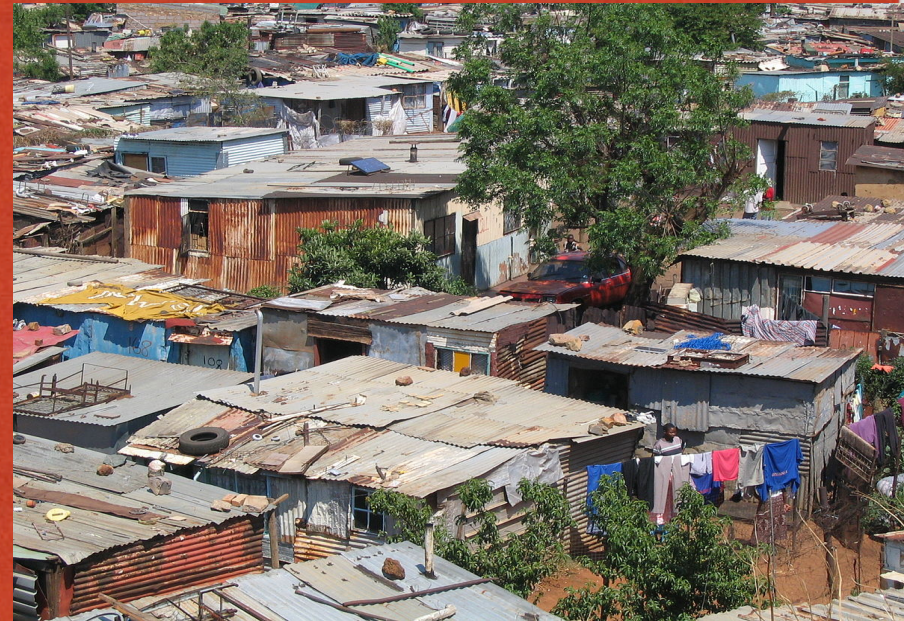
Research task

Can you find five fantastic facts about Kenya to share with someone in your family? Write these on the worksheet.

Make sure your facts include both **human and **physical** geography!**

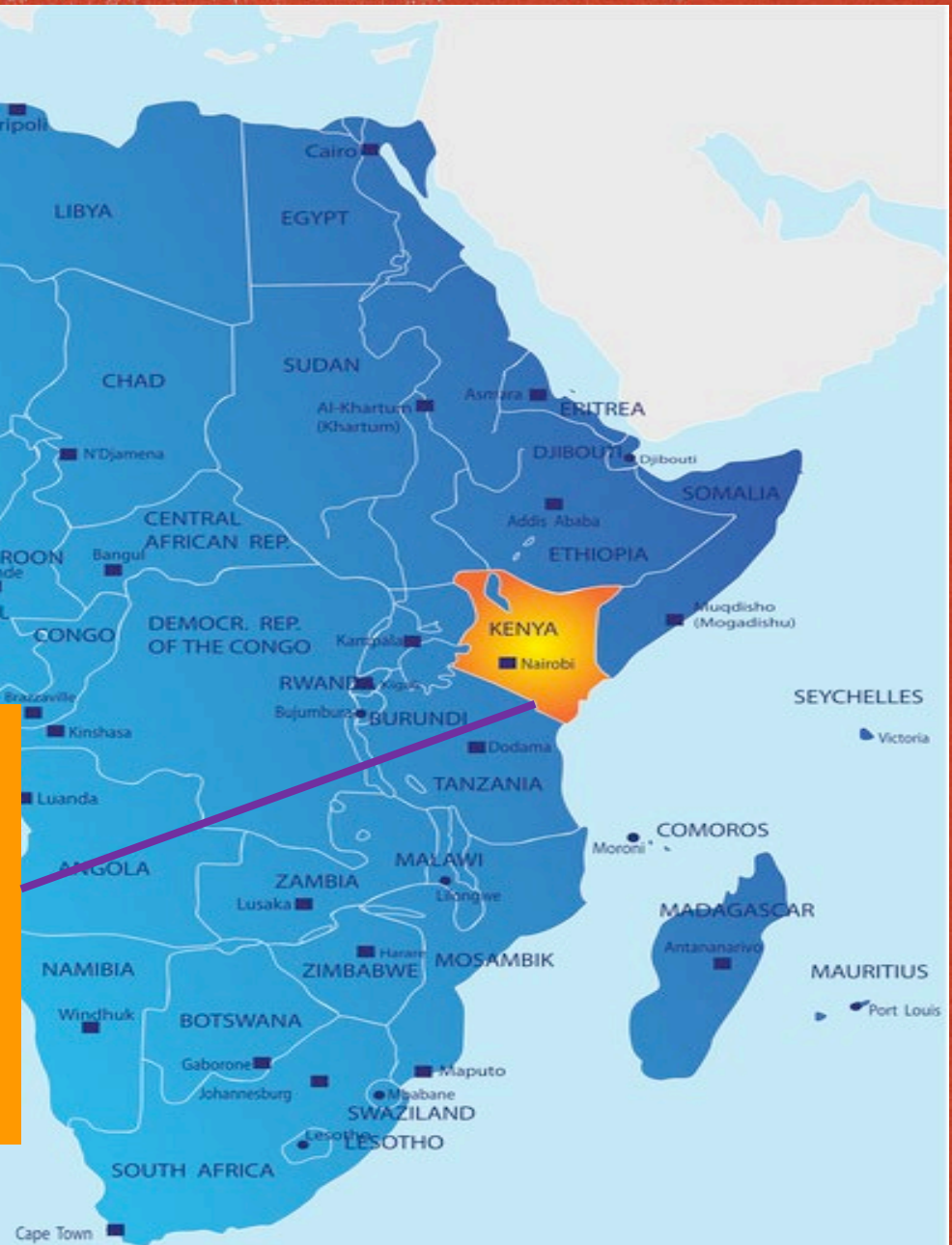
Living in a slum

L.O: To describe a slum environment and the problems that are faced by the people who live there



Starter: Using the images above and any knowledge you may already have, explain what a slum is in no more than two sentences on the worksheet

We are going to study a slum in the capital city of Kenya, Nairobi – the slum is one of the largest in the world and home to over 250,000 people – known as the **Kibera Slum**.



Task: On the next six slides will be some images showing life in the Kibera Slum. Use the images to help you come up with the **three main challenges** that face people who live in the slum. Write these onto the worksheet.













Facts about the Kibera Slum

- Kibera means “forest” or “jungle”
- The Kibera slum is located on the outside of Nairobi city centre to the north-east of the city
- Kibera is not the only slum in Nairobi – there are many more slums which are found alongside major roads out of the city
- The people who live in Kibera are living on government owned land illegally – they have no rights to their homes
- 9 villages make up Kibera.
- The houses/shacks found in Kibera are poorly made as they were built illegally using basic materials such as iron, broken bricks, plastic sheets, mud walls, corrugated tin roofs or concrete walls/floors.
- Typically 8 people live in each shack that measures 12ft x 12ft
- Only about 20% of Kibera has an electricity supply



This is George and he lives in Kibera. He lives in a small house with his 4 brothers, 2 sisters and his parents. He is 11 years old.

What differences do you think there might be between your life and Georges? Write them down on the worksheet.

- The link below is for a video that shows a school in the Kibera Slum - You will see some of the **challenges** that the school is facing as well as the pupils who attend
- Watch the first **5 minutes** of the video and use it to help you **answer the seven questions** on the worksheet
- Video link -
https://www.youtube.com/watch?v=urG8-_fcElw

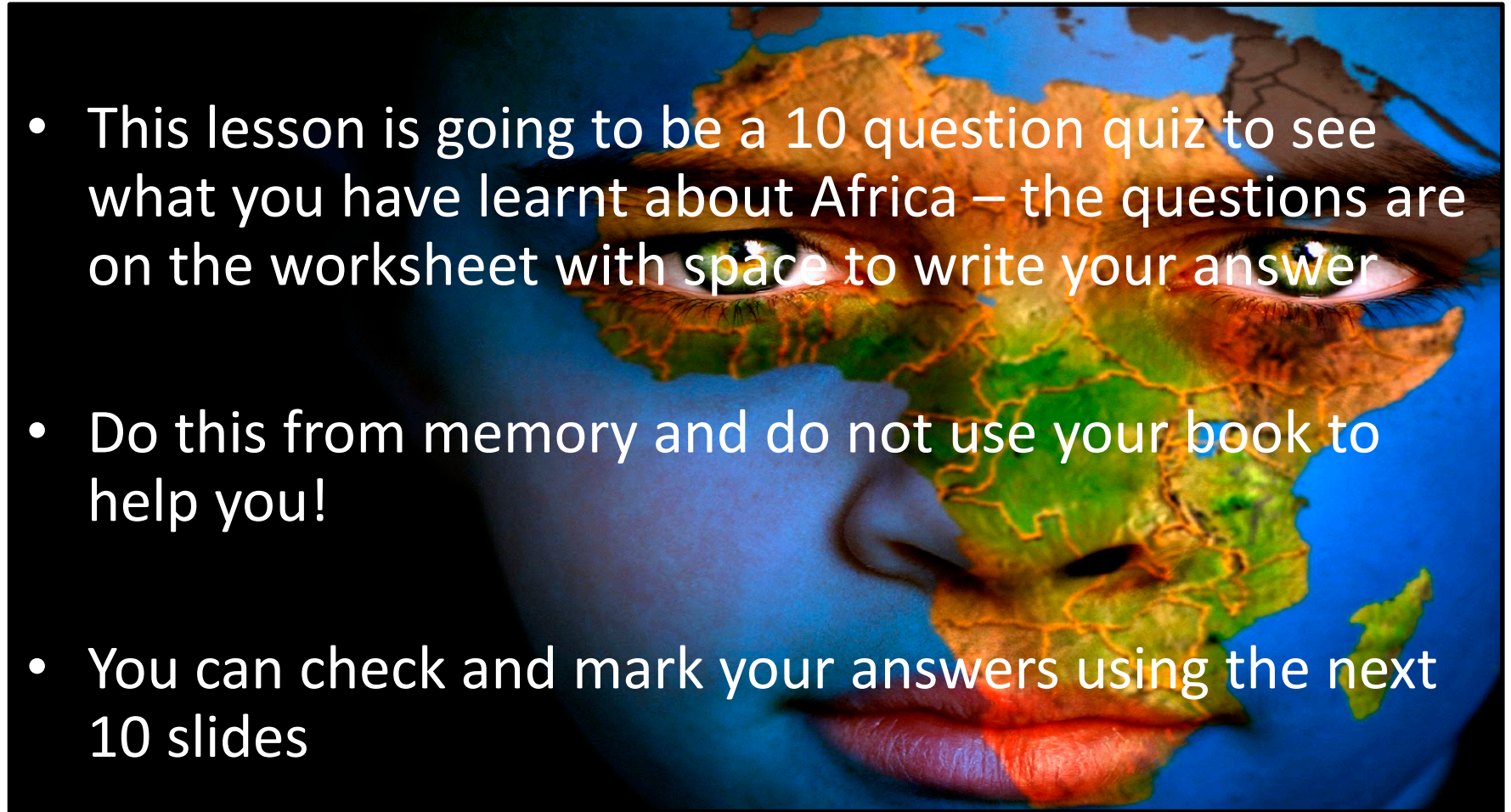
Video questions:

- 1) What are the ages of the children who go to the school in the video?
- 2) Who built the school?
- 3) Name one of the main challenges that the school has
- 4) What does the school need more of?
- 5) Name one challenge for a pupil who attends the school

The final part of your Africa work
is a 10 question quiz

Africa quiz – Let's see what you have learnt

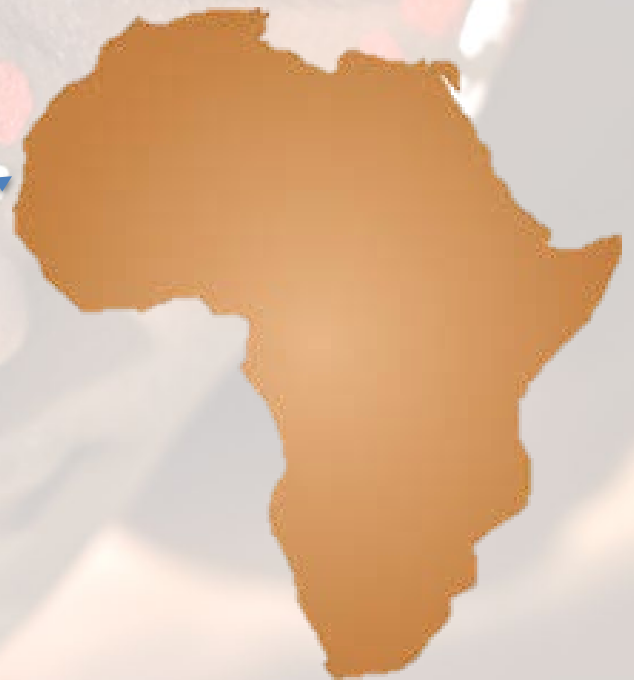
- This lesson is going to be a 10 question quiz to see what you have learnt about Africa – the questions are on the worksheet with space to write your answer
- Do this from memory and do not use your book to help you!
- You can check and mark your answers using the next 10 slides



Quiz – Question 1 Answer

- Draw the map of Africa from memory
 - *This will be the outline of the continent and does not need to include any other features*

This is the correct outline of Africa – how close was yours??



Quiz – Question 2

- Describe the location of Africa in the world in no more than two sentences
 - *Remember to include compass directions*
 - *Africa* is located south of Europe and west of Asia, between the Atlantic and Indian Oceans

Quiz – Question 3

- Is Africa a country or a continent?
 - *Write your answer and explain the difference between a country and a continent.*
 - Africa is a continent. A Continent is a large land mass covering the Earth's surface. There are 7 in the world. Continents are made up of countries. Countries have their own rules, languages and cultures.

Quiz – Question 4

- The Sahara Desert is located in Africa. True or false?

- **True**, The Sahara Desert is located in North Africa

Quiz – Question 5

- How much of the Uks fruit and vegetable products come from Africa?
 - *Give your answer as a percentage*
 - The UK currently imports 95% of our fruit and 50% of our vegetables from Africa

Quiz – Question 6

- How many countries make up the continent of Africa?
- *Can you name any of the countries?*
- 54 Countries make up the continent of Africa

Quiz – Question 7

- Read the two definitions of the different types of aid below. Decide which is the definition for short term aid and which is for long term aid

A - This is aid that will help countries develop over months or years. It can take a long time for this type of aid to take effect but it will be long lasting =

Long-term aid

B - Sometimes known as emergency aid. This aid is given when a problem has occurred and is urgently needed = **Short-term aid**

Quiz – Question 8

- Around 600 years ago the majority of Africa was 'colonised' by Europeans. They took over parts of Africa for themselves and sold African people as slaves. **Is this true or false?**

- This is true

Quiz – Question 9

- Kenya is located next to the Atlantic Ocean and borders Nigeria. **True or false?**
 - This is **False**. Kenya is located next to the Indian Ocean on the East coast of Africa and borders Tanzania, Uganda, Somalia, South Sudan and Ethiopia

Quiz – Question 10

- What do you think the total population of Africa is?
 - The total population of Africa is 1.28 billion people

How close were you to the correct number??

Quiz feedback:

1 to 3 questions correct = Improvements needed.
You should go back over your Africa work and revise from it

4 to 6 questions correct = could be better but not a bad attempt

7+ questions correct = well done! Your knowledge of Africa is excellent!